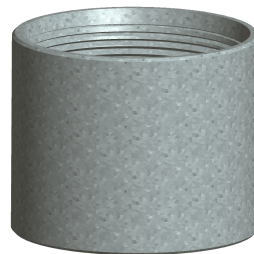
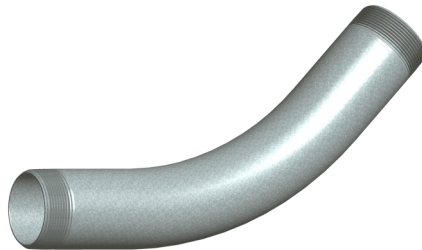
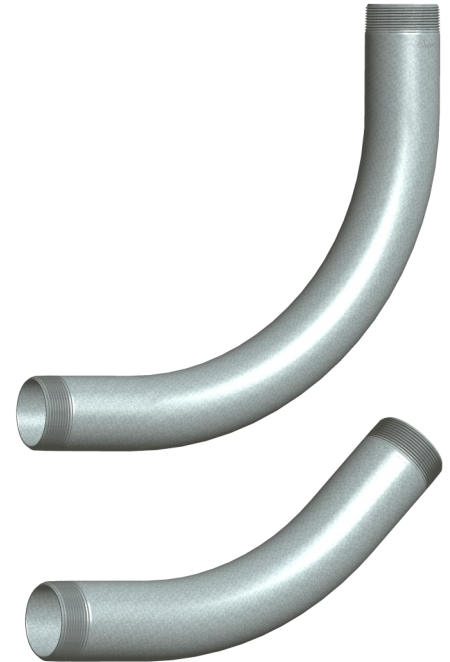
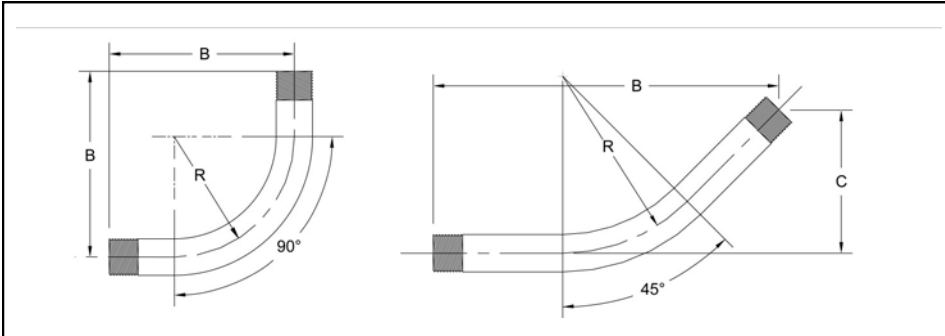


CONDUIT

pipe products, co.



Rigid Conduit Elbows 90° and 45°



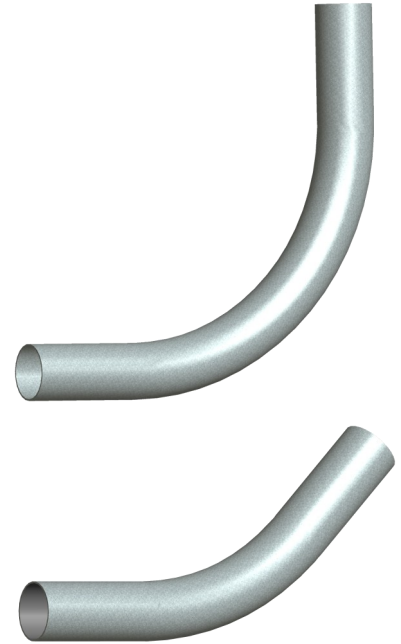
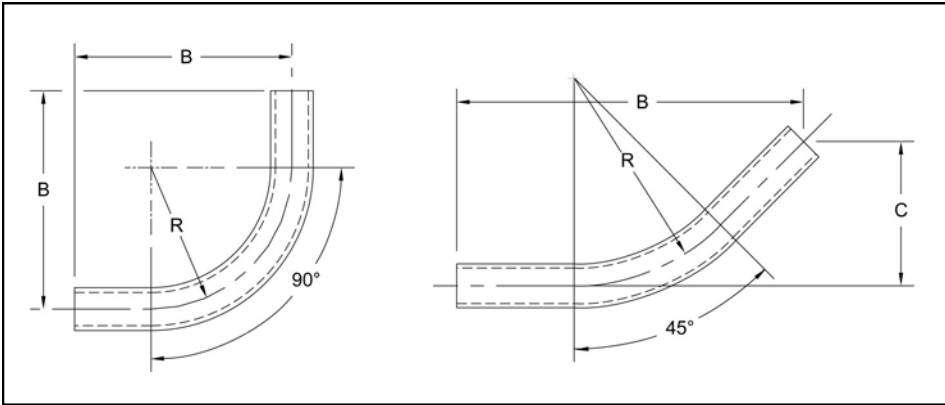
Standard Radius				
Size	Radius R	90° B Dim.	45° B Dim.	45° C Dim.
1/2	4	6-3/16	7-13/16	3-1/4
3/4	4-1/2	6-3/4	8-11/16	3-5/8
1	5-3/4	8-5/8	9-3/16	3-13/16
1-1/4	7-1/4	10-1/16	10-11/16	4-7/16
1-1/2	8-1/4	11-9/16	11-13/16	4-7/8
2	9-1/2	14-1/16	14-7/8	6-1/8
2-1/2	10-1/2	16	18-5/16	7-9/16
3	13	19-11/16	20-9/16	8-1/2
3-1/2	15	22-3/16	23-3/16	9-5/8
4	16	23-1/8	24-1/2	10-1/8
5	24	36-1/8	38-1/4	15-7/8
6	30	42-15/16	42	17-3/8

Special Radius				
Radius R	Sizes Available	90° B Dim.	45° B Dim.	45° C Dim.
12	1 thru 2-1/2	21	23-7/8	9-7/8
15	1 thru 3	24	26	10-3/4
18	1 thru 4	28	29-3/4	12-3/8
24	1 thru 4	35	35-3/4	14-13/16
30	1 thru 5	41	40	16-9/16
36	1 thru 6	47	44-1/4	18-5/16
42	1 thru 6	54	50-1/8	20-13/16
48	1 thru 6	60	54-3/8	22-9/16
60	1 thru 6	72	62-7/8	26-1/16

Material: Galvanized Steel, 304 Stainless Steel and Aluminum Elbows are listed cULus and meet requirements of both CSA and UL.
 5" and 6" Elbows are available only in Galvanized Steel and Aluminum.
 316 Stainless Steel Elbows are available upon request.
 Aluminum Elbows are made from 6063 alloy with a maximum Copper content of 0.1%.

Notes: 11-1/4", 15", 22-1/2", 30" and 60" Elbows are also available.
 Both ends NPT threads conform to ANSI B1.20.1.
 Larger than 60" Radius Segmented Special Radius Elbows available in Galvanized Steel, please specify Pipe Size X Radius X Bend Angle when contacting our Sales Department.

EMT Elbows 90° and 45°



Standard Radius				
Size	Radius R	90° B Dim.	45° B Dim.	45° C Dim.
1/2	4	6-3/16	7-13/16	3-1/4
3/4	4-1/2	6-11/16	8-11/16	3-5/8
1	5-3/4	8-9/16	9-3/16	3-13/16
1-1/4	7-1/4	9-15/16	10-11/16	4-7/16
1-1/2	8-1/4	11-1/2	11-13/16	4-7/8
2	9-1/2	14-1/16	14-7/8	6-1/8
2-1/2	10-1/2	16	18-5/16	7-9/16
3	13	18-13/16	20-9/16	8-1/2
3-1/2	15	23	23-3/16	9-5/8
4	16	24-7/16	24-1/2	10-1/8

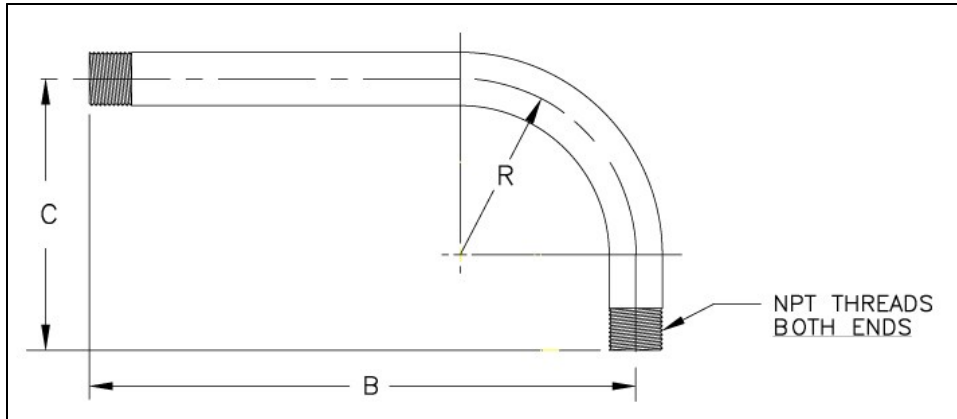
Special Radius				
Radius R	Sizes Available	90° B Dim.	45° B Dim.	45° C Dim.
12	1-1/4 thru 2	21	23-7/8	9-7/8
15	1-1/2 thru 2	24	26	10-3/4
18	1-1/4 thru 2	28	29-3/4	12-3/8
24	2 thru 3-1/2	35	35-3/4	14-13/16
30	3 thru 4	41	40	16-9/16
36	1-1/2 thru 4	47	44-1/4	18-5/16
42	3-1/2 thru 4	54	50-1/8	20-13/16
48	1-1/2, 3 thru 4	60	54-3/8	22-9/16

Material: Galvanized Steel EMT Elbows are listed cUL_{US} and meet requirements of both CSA and UL.

Note: 11-1/4°, 15°, 22-1/2°, 30° and 60° Elbows are also available.

CONDUIT pipe products, co.

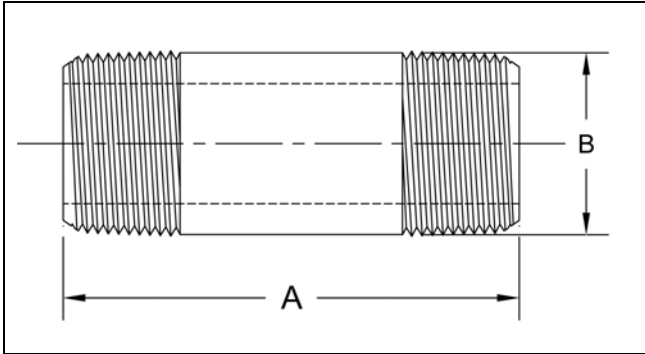
A Member of The Phoenix Forge Group
1501 West Main Street
West Jefferson, OH 43162



Size	Radius R	B Dim	C Dim
1/2	4	18	6-3/16
3/4	4-1/2	18	6-3/4
1	5-3/4	18	8-5/8
1-1/4	7	19-1/4	10-1/4
1-1/2	8-1/4	20-1/2	11-5/8
2	9-1/2	21-1/2	14-1/2
2-1/2	10-1/2	22-1/2	16
3	13	25	19-1/4
3-1/2	15	27	22-3/4
4	16	28	24



Conduit Nipples



Size	Diameter B	Dim A													
		Close Length	1-1/2	2	2-1/2	3	3-1/2	4	4-1/2	5	5-1/2	6	8	10	12
1/2	.840	1-1/8	X	X	X	X	X	X	X	X	X	X	X	X	X
3/4	1.015	1-3/8	X	X	X	X	X	X	X	X	X	X	X	X	X
1	1.315	1-1/2		X	X	X	X	X	X	X	X	X	X	X	X
1-1/4	1.660	1-5/8		X	X	X	X	X	X	X	X	X	X	X	X
1-1/2	1.900	1-3/4		X	X	X	X	X	X	X	X	X	X	X	X
2	2.375	2			X	X	X	X	X	X	X	X	X	X	X
2-1/2	2.875	2-1/2				X	X	X	X	X	X	X	X	X	X
3	3.500	2-5/8				X	X	X	X	X	X	X	X	X	X
3-1/2	4.000	2-3/4						X	X	X	X	X	X	X	X
4	4.500	2-7/8						X	X	X	X	X	X	X	X
5	5.563	3							X	X	X	X	X	X	X
6	6.625	3-1/8							X	X	X	X	X	X	X

Material: Galvanized Steel, 304 or 316 Stainless Steel and Aluminum Conduit Nipples are listed cULus and meet the requirements of both CSA and UL.
 Aluminum Conduit Nipples are made from 6063 alloy with a maximum Copper Content of 0.1%.

Notes: Lengths longer than 12" and Special threads are available upon request.
 Both ends NPT threads conform to ANSI B1.20.1.