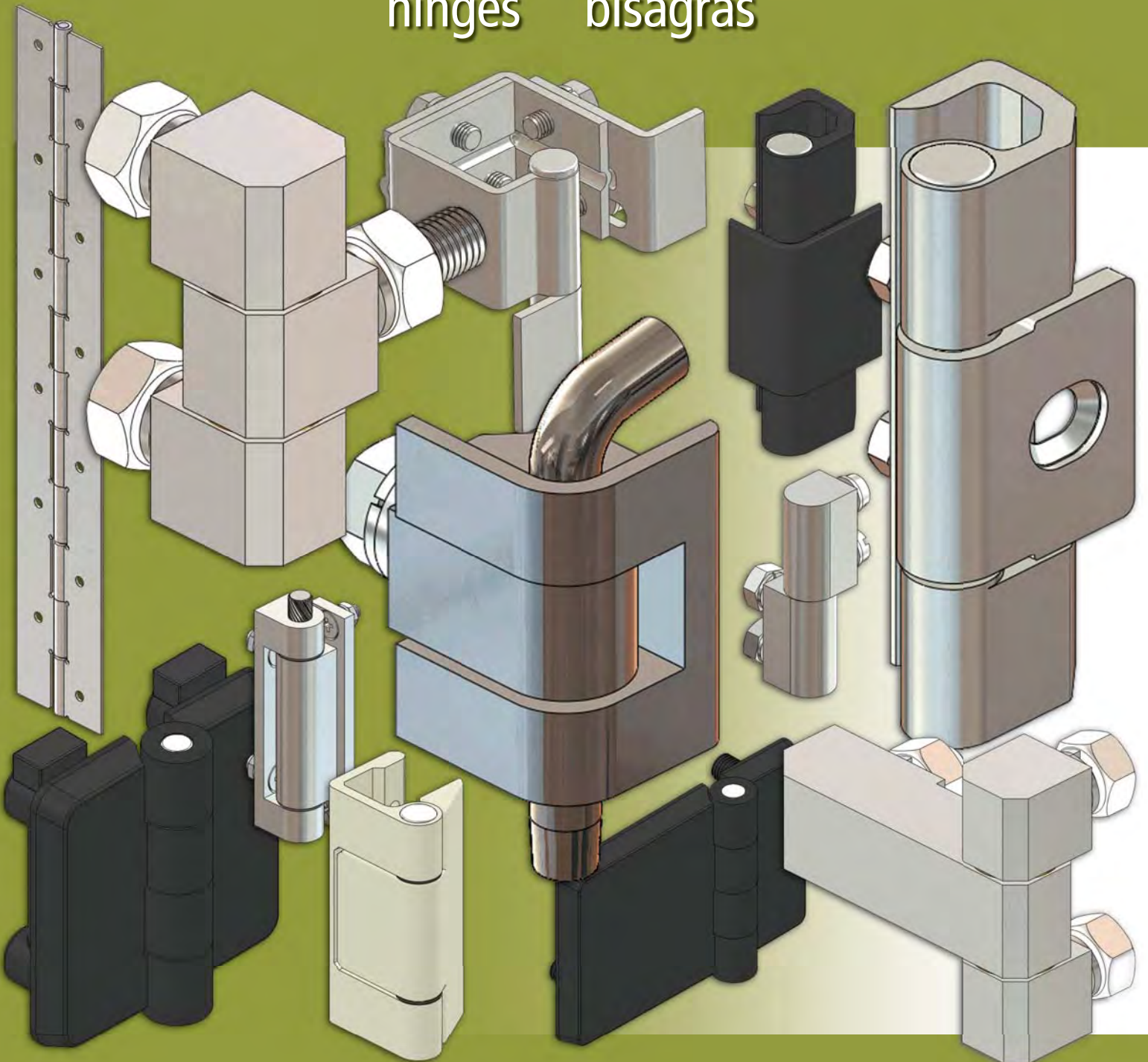


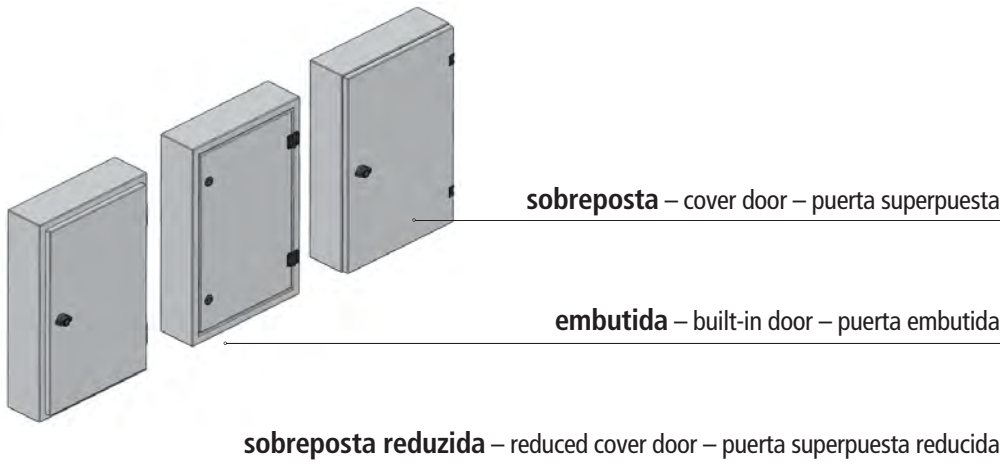


# dobradiças

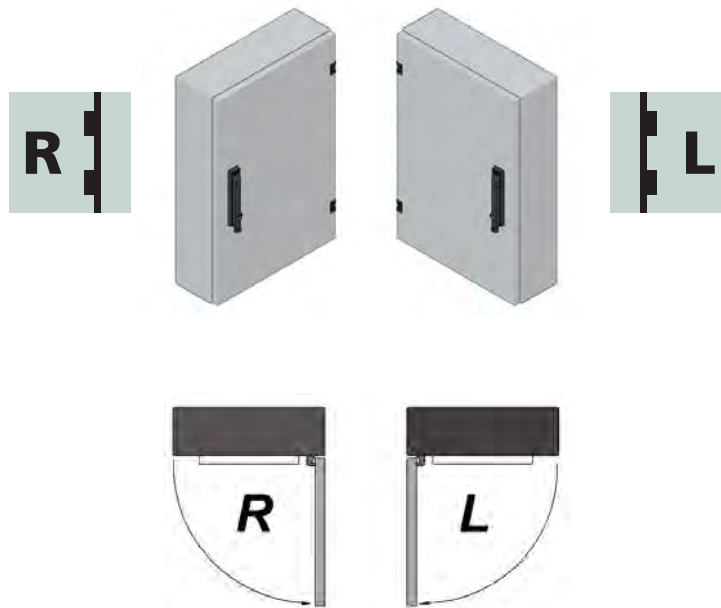
hinges bisagras



tipos de portas – doors type – tipos de puertas



abertura das portas – doors opening – apertura de puertas



graus de abertura – opening degrees – grados de apertura



tipos de dobradiças – hinges type – tipos de bisagras

IJ

**dobradiças injetadas** – injected hinges – bisagras inyectadas

ES

**dobradiças estampadas** – stamped hinges – bisagras estampadas

US

**dobradiças usinadas** – machined hinges – bisagras mecanizadas

desmontagem externa – outside disassemble – desmontaje exterior



**desmontável** – disassemble – desmontable



**não desmontável** – non disassemble – no desmontable

definição – definition – definición

– **Dobradiças são dispositivos que permitem a abertura de portas através do giro de um dos lados da porta.**

– Hinges are devices that allow the doors opening through the spinning of one of the doors side.

– Bisagras son dispositivos que permiten la apertura de puertas a traves del giro de uno de los lados de la puerta.

planas pino removível – flat removable pin – planas eje removible  
sem parafuso – without screw – sin tornillo



**Fixação**

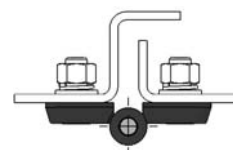
Por parafuso cabeça chata Philips (vendido separadamente).

**Fixing**

By Phillips flat head screw (sold separately).

**Fijación**

Por tornillo de cabeça plana Philips (vendido en separado).



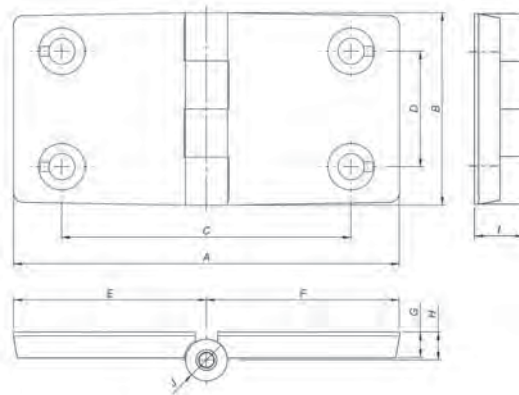
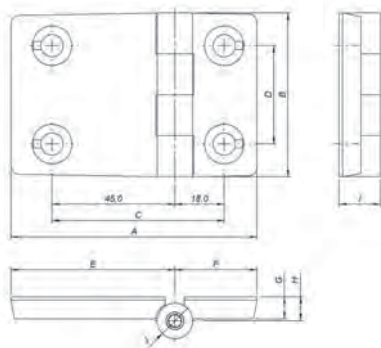
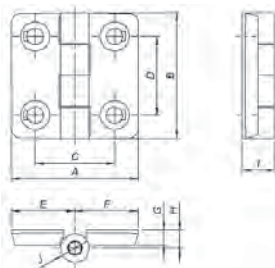
DIPR-SP4040  
DIPR-SP5050  
DIPR-SP6060



DIPR-SP9060



DIPR-SP12060



PARAFUSOS SCREWS TORNILLOS	CABEÇA – HEAD – CABEZA	TIPO – TYPE – TIPO	MEDIDAS – MEASUREMENT – DIMENSIONES (mm)	CÓDIGO – CODE – CÓDIGO
	CHATA – FLAT – PLANA	PHILIPS	M5 x 16	75A.101
			M6 x 16	75A.102
			M8 x 20	75A.103

FIXAÇÃO POR PARAFUSOS FIXING BY SCREWS FIJACIÓN POR TORNILLOS	MODELO – MODEL – MODELO	CÓDIGO – CODE – CÓDIGO	MEDIDAS – MEASUREMENT – DIMENSIONES (mm)									
			A	B	C	D	E	F	G	H	I	J
	DIPR-SP4040P	41.033.A20	40	40	25	25	20	20	5	6	10,5	ø 09
DIPR-SP5050P	41.033.A14	50	50	30	30	25	25	6	7	12,5	ø 11	
DIPR-SP6060P	41.033.A17	60	60	36	36	30	30	8	9	15,5	ø 13	
DIPR-SP9060P	41.033.A18	90	60	63	36	60	30	8	9	15,5	ø 13	
DIPR-SP12060P	41.033.A19	120	60	90	36	60	60	8	9	15,5	ø 13	

planas pino removível – flat removable pin – planas eje removible  
por pino – by pin – por clavija



**Fixação**

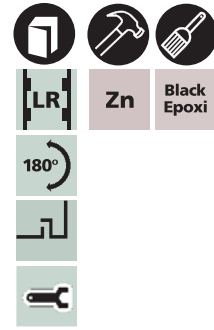
Por pino em poliamida próprio para espessuras 1,6 ou 2,1mm.

**Fixing**

By polyamide pin suitable for thicknesses 1,6 or 2,1mm.

**Fijación**

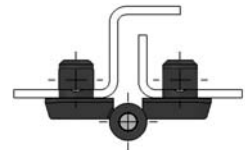
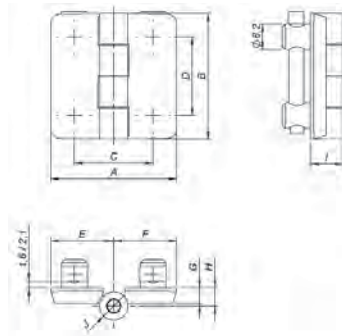
Por clavija en poliamida adecuada para espesores 1,6 o 2,1mm.



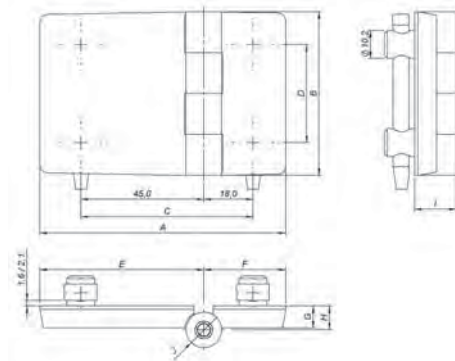
Zn  
Black Epoxi



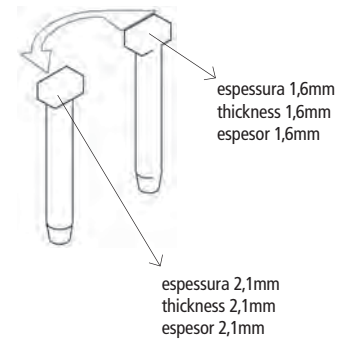
DIPR-PP4040  
DIPR-PP5050  
DIPR-PP6060



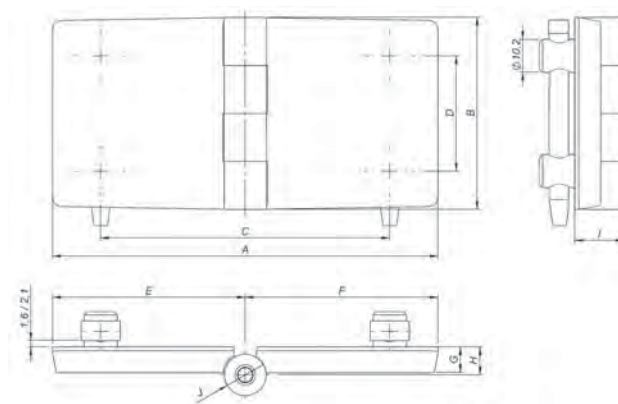
DIPR-PP9060



montagem – assembly – montaje



DIPR-PP12060



FIXAÇÃO POR PINOS FIXING BY PINS FIJACIÓN POR CLAVIJAS	MODELO – MODEL – MODELO	CÓDIGO – CODE – CÓDIGO	MEDIDAS – MEASUREMENT – DIMENSIONES (mm)									
			A	B	C	D	E	F	G	H	I	J
			DIPR-PP4040P	41.033.A07	40	40	25	25	20	20	5	6
DIPR-PP5050P	41.033.A08	50	50	30	30	25	25	6	7	12,5	ø 11	
DIPR-PP6060P	41.033.A11	60	60	36	36	30	30	8	9	15,5	ø 13	
DIPR-PP9060P	41.033.A12	90	60	63	36	60	30	8	9	15,5	ø 13	
DIPR-PP12060P	41.033.A13	120	60	90	36	60	60	8	9	15,5	ø 13	

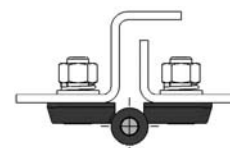
planas pino fixo – flat fixed pin – planas eje fijo  
parafuso embutido – flush screw – tornillo embutido



**Fixação**  
Por parafuso embutido.

**Fixing**  
By flush screw.

**Fijación**  
Por tornillo embutido.



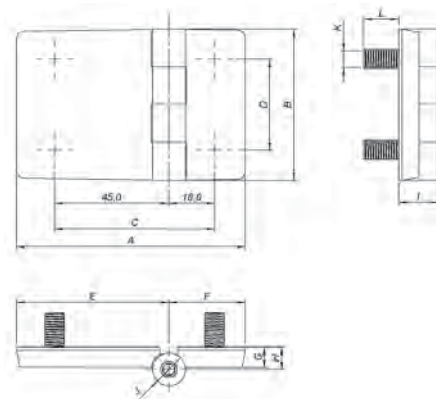
dobradiças hinges bisagras



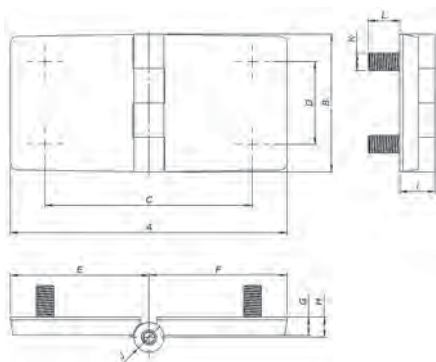
DIPF-PE4040  
DIPF-PE5050  
DIPF-PE6060



DIPF-PE9060



DIPF-PE12060



FIXAÇÃO POR PARAFUSOS FIXING BY SCREWS FIJACIÓN POR TORNILLOS	MODELO – MODEL – MODELO	CÓDIGO – CODE – CÓDIGO	MEDIDAS – MEASUREMENT – DIMENSIONES (mm)											
			A	B	C	D	E	F	G	H	I	J	K	L
	DIPF-PE4040P	42.033.A01	40	40	25	25	20	20	5	6	10,5	ø 09	M5	12
	DIPF-PE5050P	42.033.A02	50	50	30	30	25	25	6	7	12,5	ø 11	M6	12
	DIPF-PE6060P	42.033.A03	60	60	36	36	30	30	8	9	15,5	ø 13	M8	13
	DIPF-PE9060P	42.033.A04	90	60	63	36	60	30	8	9	15,5	ø 13	M8	13
	DIPF-PE12060P	42.033.A05	120	60	90	36	60	60	8	9	15,5	ø 13	M8	13

planas pino fixo – flat fixed pin – planas eje fijo  
por pino – by pin – por clavija



**Fixação**

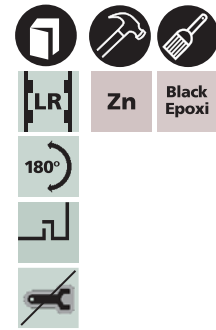
Por pino em poliamida próprio para espessuras 1,6 ou 2,1mm.

**Fixing**

By polyamide pin suitable for thicknesses 1,6 or 2,1mm.

**Fijación**

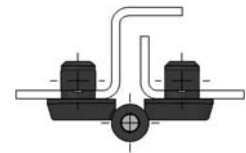
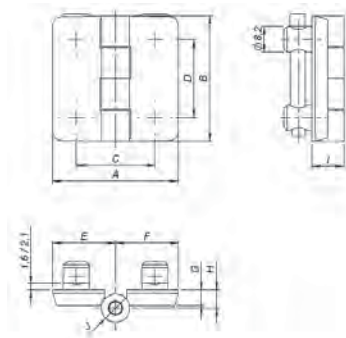
Por clavija en poliamida adecuada para espesores 1,6 o 2,1mm.



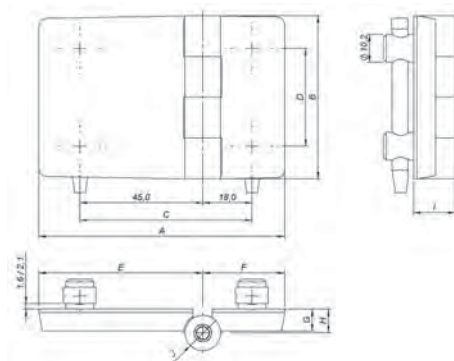
Zn  
Black Epoxi



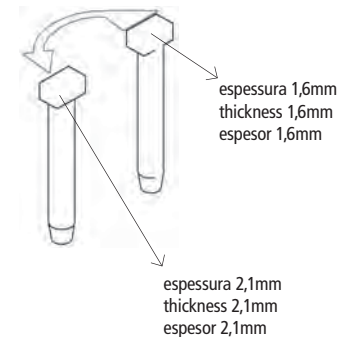
DIPF-PP4040  
DIPF-PP5050  
DIPF-PP6060



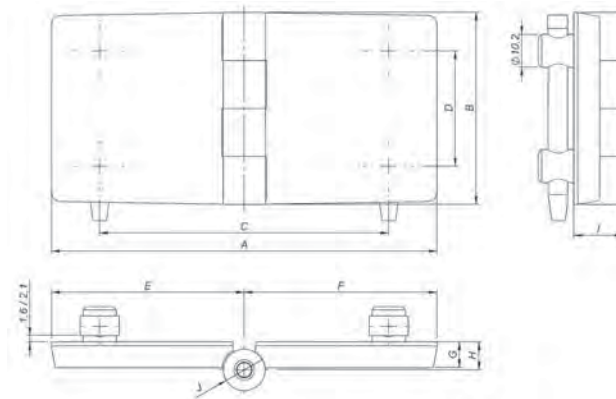
DIPF-PP9060



montagem – assembly – montaje



DIPF-PP12060



FIXAÇÃO POR PINOS FIXING BY PIN FIJACIÓN POR CLAVIJAS	MODELO – MODEL – MODELO	CÓDIGO – CODE – CÓDIGO	MEDIDAS – MEASUREMENT – DIMENSIONES (mm)									
			A	B	C	D	E	F	G	H	I	J
	DIPF-PP4040P	42.033.A06	40	40	25	25	20	20	5	6	10,5	ø 09
	DIPF-PP5050P	42.033.A07	50	50	30	30	25	25	6	7	12,5	ø 11
	DIPF-PP6060P	42.033.A08	60	60	36	36	30	30	8	9	15,5	ø 13
	DIPF-PP9060P	42.033.A09	90	60	63	36	60	30	8	9	15,5	ø 13
	DIPF-PP12060P	42.033.A10	120	60	90	36	60	60	8	9	15,5	ø 13

DIST-D20

dobradiças injetadas  
injected hinges  
bisagras injectadas



standard D20 – standard D20 – standard D20

dobradiças  
hinges  
bisagras

**Fixação**

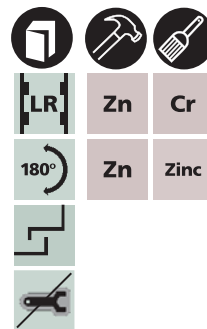
Por parafuso M5 em aço zincado (incluso no fornecimento).

**Fixing**

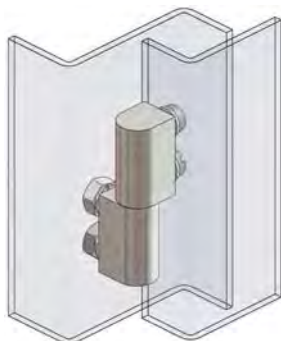
By zinc plated steel screw M5 (included).

**Fijación**

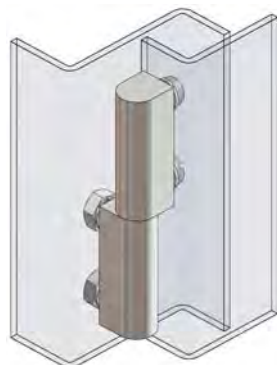
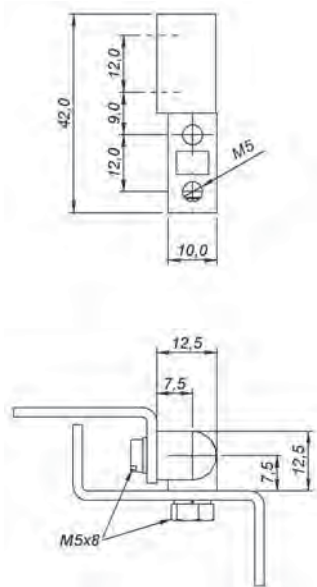
Por tornillo M5 en acero cincado (incluído en el suministro).



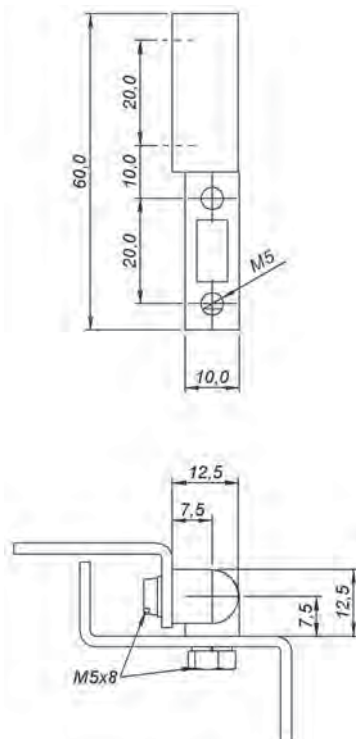
Zn	Cr
Zn	Zinc



DIST-407/D20



DIST-607/D20



MODELO – MODEL – MODELO	CÓDIGO – CODE – CÓDIGO
DIST-407Z/D20	40.188.201
DIST-607Z/D20	40.188.202
DIST-407C/D20	40.122.201
DIST-607C/D20	40.122.202



standard D25 – standard D25 – standard D25

**Fixação**

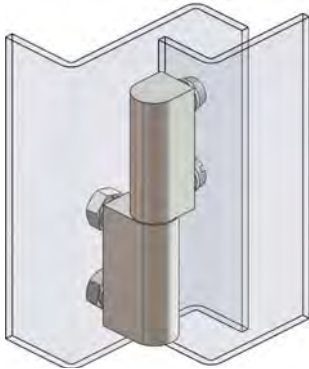
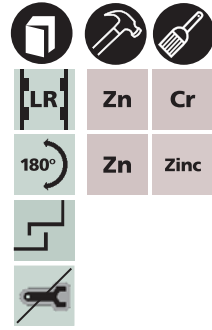
Por parafuso M5 em aço zinca-  
 do (incluso no fornecimento).

**Fixing**

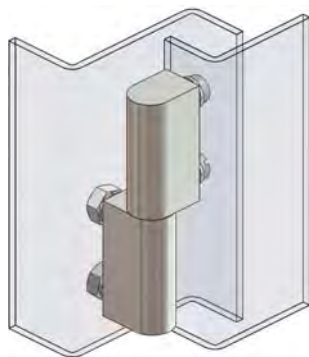
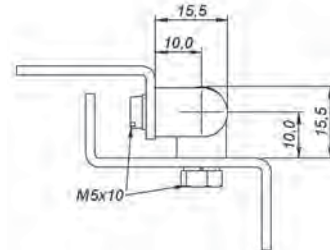
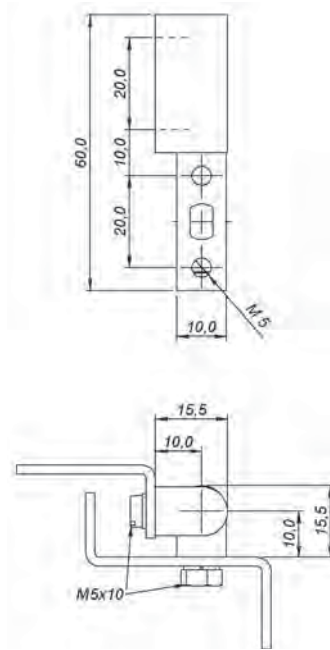
By zinc plated steel screw M5  
 (included).

**Fijación**

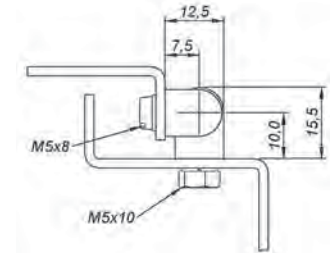
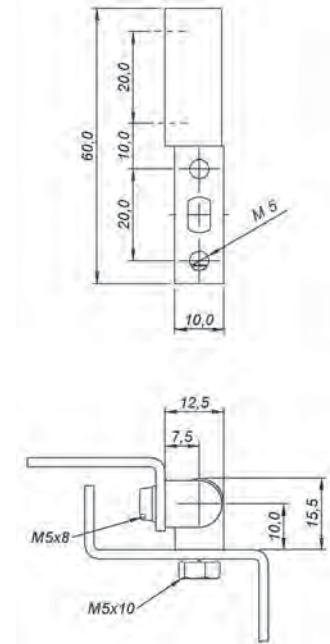
Por tornillo M5 en acero cincado  
 (incluído en el suministro).



DIST-610/D25



DIST-617/D25



MODELO – MODEL – MODELO	CÓDIGO – CODE – CÓDIGO
DIST-610Z/D25	40.188.203
DIST-617Z/D25	40.188.204
DIST-610C/D25	40.122.204
DIST-617C/D25	40.122.205

encaixe – fitting – encaje

dobradiças hinged bisagras

**Fixação**

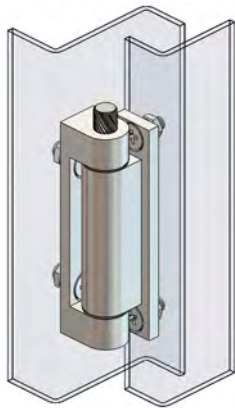
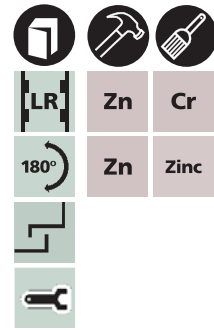
Por parafuso cabeça chata e porca em aço zincado (incluído no fornecimento).

**Fixing**

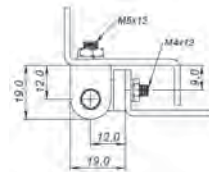
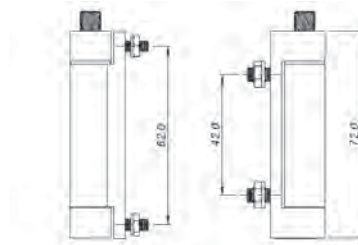
By flat head screw and zinc plated steel thread (included).

**Fijación**

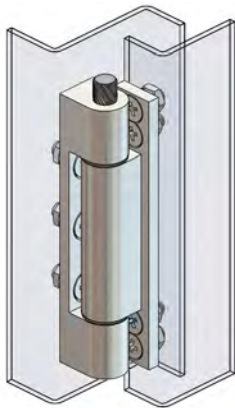
Por tornillo de cabeça plana e tuerca em aço cincado (incluído en el suministro).



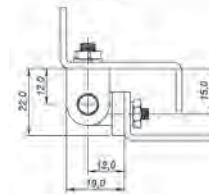
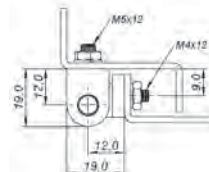
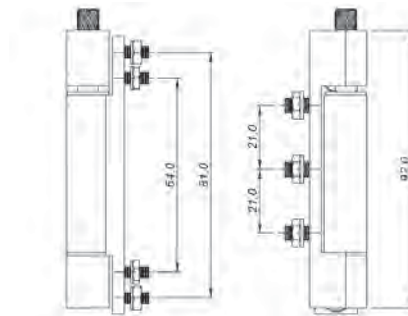
DIEC-72



opções de montagem  
 assembly options  
 opciones de montaje



DIEC-92



opções de montagem  
 assembly options  
 opciones de montaje

MODELO – MODEL – MODELO	CÓDIGO – CODE – CÓDIGO
DIEC-72Z	40.388.201
DIEC-92Z	40.388.202
DIEC-72C	40.322.201
DIEC-92C	40.322.202

semi embutida – semi embedded – semi embutida

poliamida 6 – polyamide 6 – poliamida 6



**Fixação**

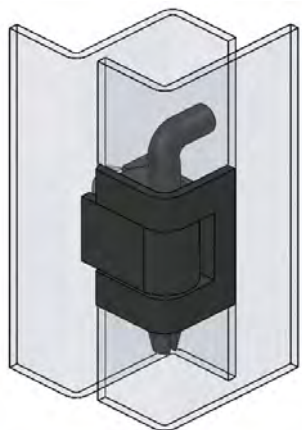
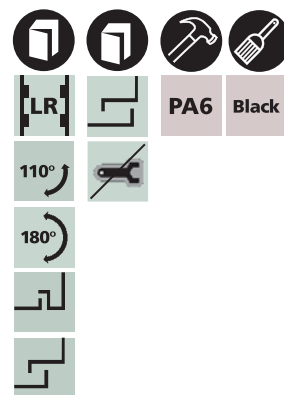
Por parafuso cabeça chata M4 em aço zincado (não incluso no fornecimento) e pino de giro em poliacetal.

**Fixing**

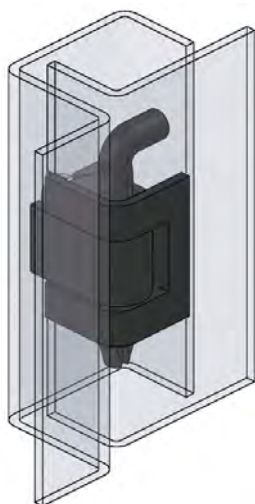
By M4 flat head zinc plated steel screw (not included) and polyacetal spin pin.

**Fijación**

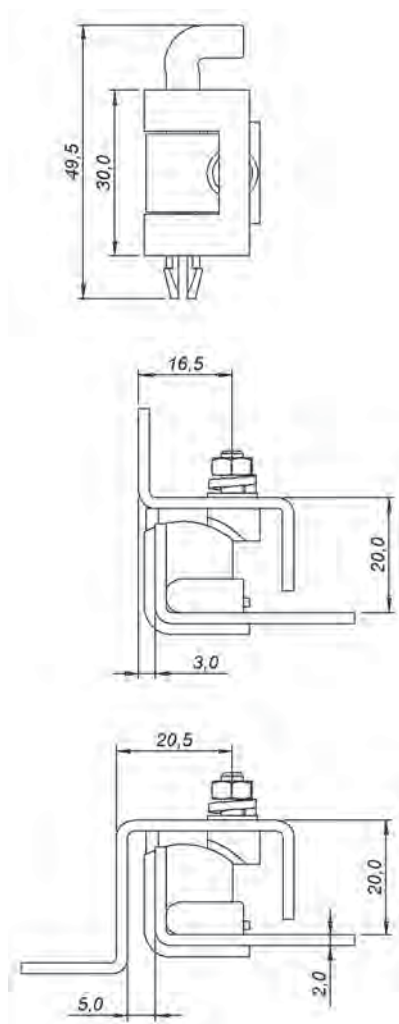
Por tornillo cabeza plana M4 en acero cincado (no incluido en el suministro) y eje de giro en poliacetal.



DISE-PP



DISE-PP



recorte de fixação  
 cut out  
 corte de fijación

MODELO – MODEL – MODELO	CÓDIGO – CODE – CÓDIGO
DISE-PP	40.244.001

## DISE-Z

dobradiças injetadas  
injected hinges  
bisagras injectadas

semi embutida – semi embedded – semi embutida

zamac – zamac – zamac

**Fixação**

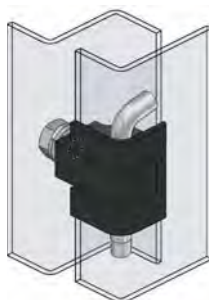
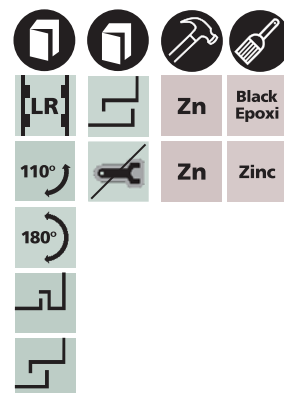
Por parafuso M6 x 12 em aço zincado (incluso no fornecimento).

**Fixing**

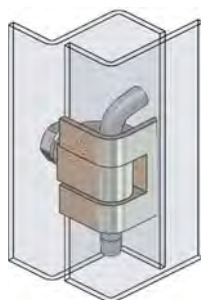
By M6 x 12 zinc plated steel screw (included).

**Fijación**

Por tornillo M6 x 12 en acero cincado (incluido en el suministro).



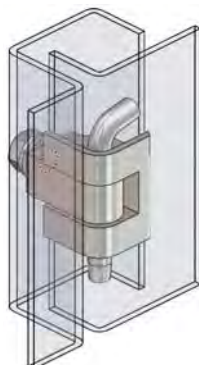
DISE-ZP/D20



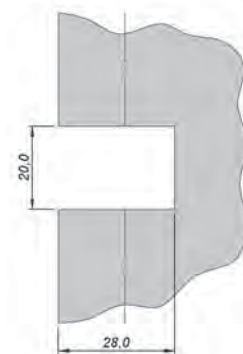
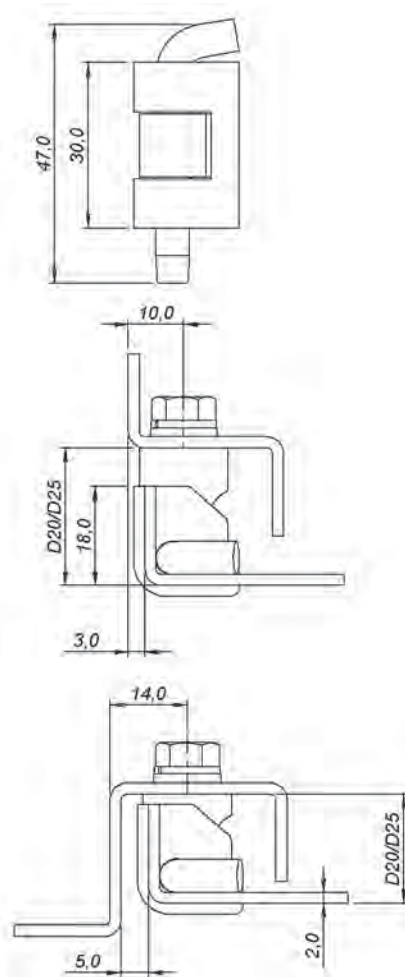
DISE-ZZ/D20



DISE-ZP/D25



DISE-ZZ/D25

recorte de fixação  
cut out  
corte de fijación

MODELO – MODEL – MODELO	CÓDIGO – CODE – CÓDIGO
DISE-ZZ/D20	40.288.201
DISE-ZZ/D25	40.288.202
DISE-ZP/D20	40.233.201
DISE-ZP/D25	40.233.202

painel – panel – armario

120° – 120° – 120°

**Fixação**

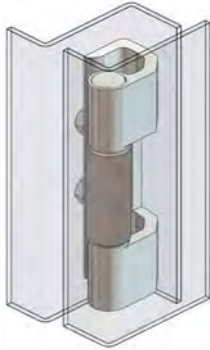
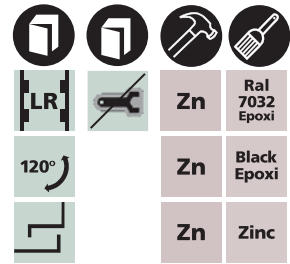
Por solda (versão invisível), por parafuso (versão regulável), por pino (versão encaixe). Utiliza furação padrão de 25mm e 50mm na coluna. Intercambiável com a furação da trava do fecho no padrão de 25mm.

**Fixing**

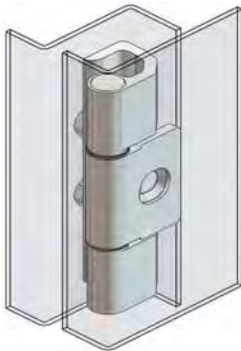
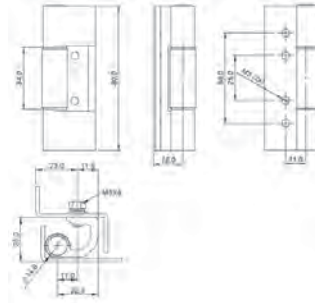
By welding (invisible version), by screw (adjustable version), by pin (fitting version). Uses 25mm and 50mm standard hole in the column. Interchangeable with the latch locking hole on 25mm standard hole.

**Fijación**

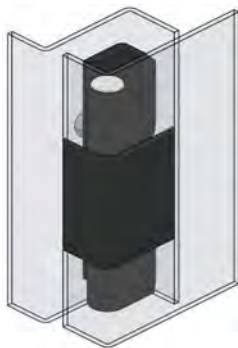
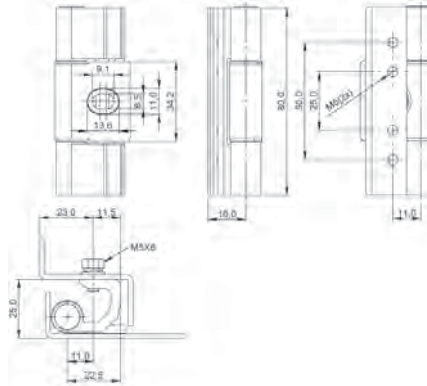
Por soldadura (versión invisible), por tornillo (versión regulable), por eje (versión encaje). Utiliza perforación estándar de 25mm y 50mm en la columna. Intercambiable con la perforación de la traba del cierre en la perforación estándar de 25mm.



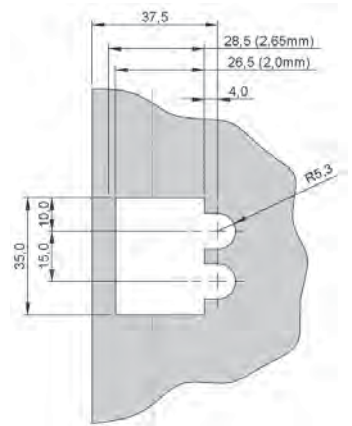
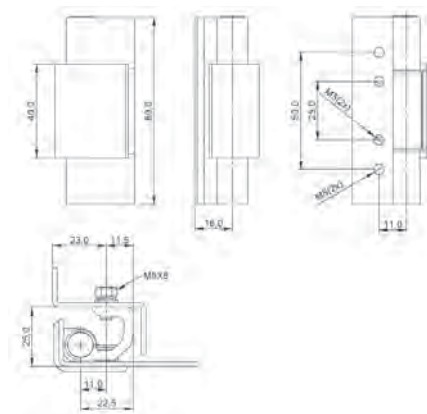
DIPA120°-SZ



DIPA120°-PZ



DIPA120°-EP



recorte de fixação  
cut out  
corte de fijación

MODELO – MODEL – MODELO	CÓDIGO – CODE – CÓDIGO	FIXAÇÃO – FIXING – FIJACIÓN
DIPA120°-SZ	41.388.201	Solda – Welding – Soldadura
DIPA120°-PZ	41.388.202	Parafuso – Screw – Tornillo
DIPA120°-EP	41.333.202	Pino – Pin – Clavija
DIPA120°-EB	41.3DD.202	Pino – Pin – Clavija

DIPA 180°

dobradiças injetadas  
injected hinges  
bisagras inyectadas



painel – panel – armario

180° – 180° – 180°

Fixação

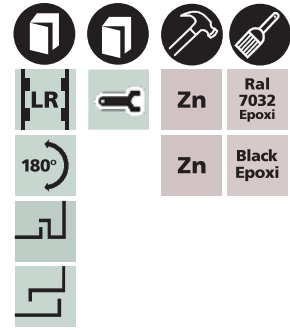
Por pino e parafuso em aço zin-  
cado (incluso no fornecimento)  
com furação padrão de 25mm  
e de 50mm na coluna.

Fixing

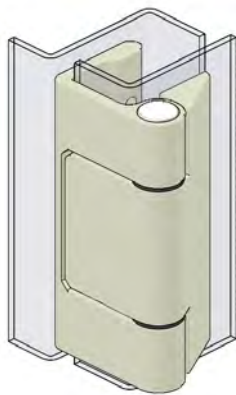
By pin and zinc plated steel  
screw (included) with 25mm  
and 50mm standard hole in  
the column.

Fijación

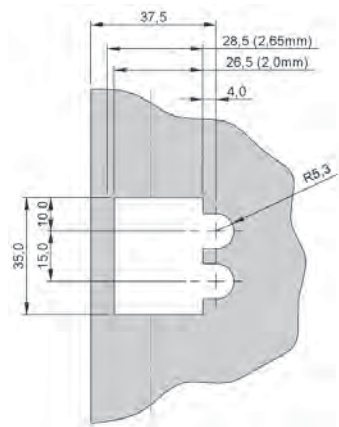
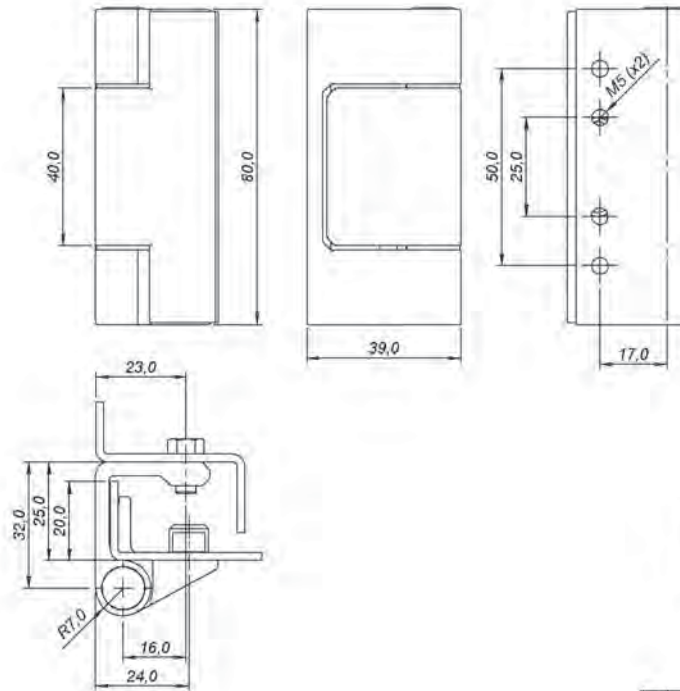
Por eje y tornillo en acero cin-  
cado (incluído en el suministro)  
con el estándar de 25mm y  
50mm de perforación en la  
columna.



DIPA180°-P



DIPA180°-B



recorte de fixação  
cut out  
corte de fijación

MODELO – MODEL – MODELO	CÓDIGO – CODE – CÓDIGO
DIPA180°-P	41.433.201
DIPA180°-B	41.4DD.201

# DELE

## dobradiças estampadas stamped hinges bisagras estampadas



leve – lightweight – liviana



### Fixação

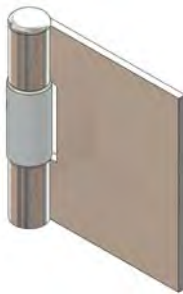
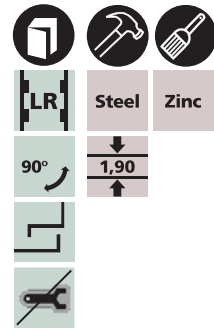
Por solda e por parafuso (não incluso no fornecimento).

### Fixing

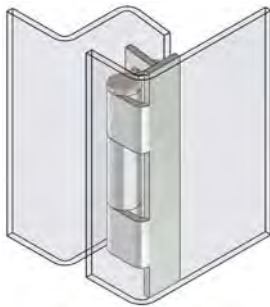
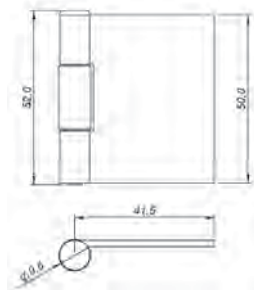
By welding and by screw (not included).

### Fijación

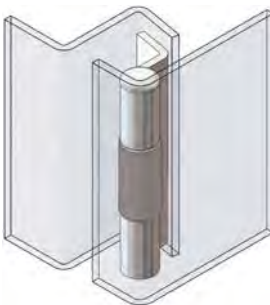
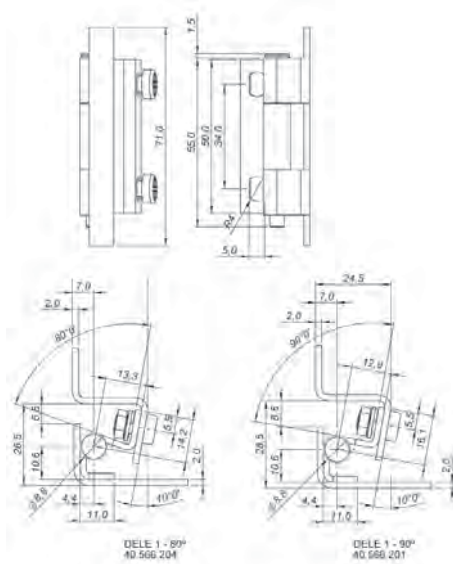
Por soldadura y por tornillo (no incluido en el suministro).



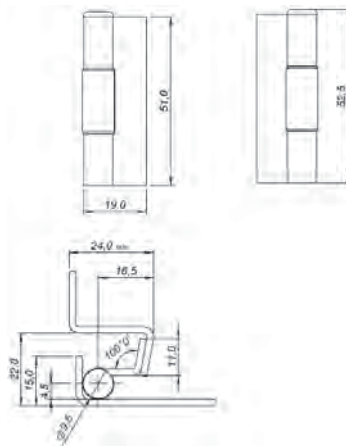
DELE-0



DELE-1



DELE-3



MODELO – MODEL – MODELO	CÓDIGO – CODE – CÓDIGO
DELE-0	40.56C.201
DELE-1	40.566.201
DELE-3	40.56C.202

DEME

dobradiças estampadas  
stamped hinges  
bisagras estampadas



média – medium – mediana



**Fixação**  
Por solda e por parafuso (não incluso no fornecimento).

**Fixing**  
By weldind and by screw (not included).

**Fijación**  
Por soldadura y por tornillo (no incluido en el suministro).

LR

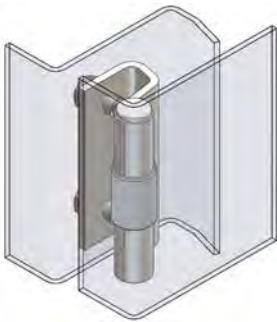
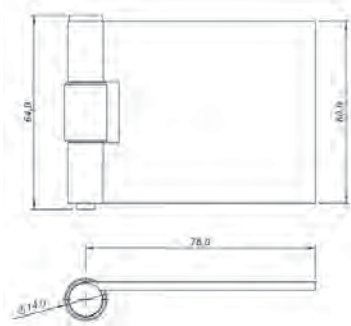
Steel Zinc

90°

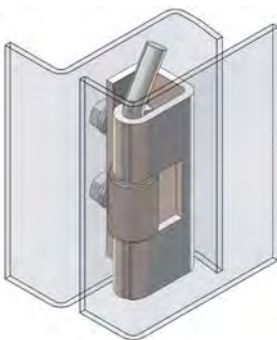
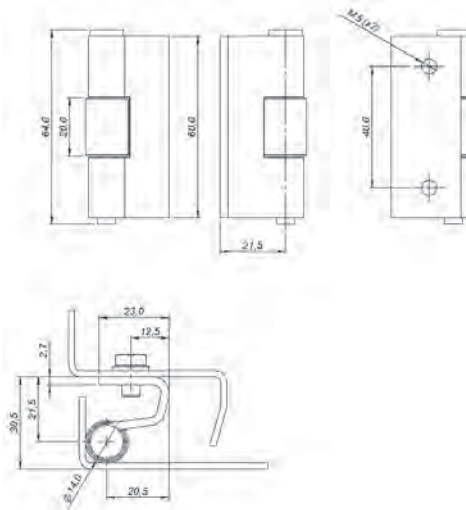
2,65



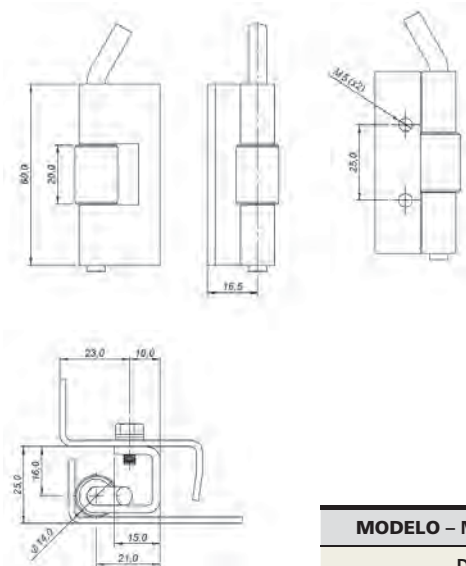
DEME-0



DEME-2



DEME-D25/120°



MODELO – MODEL – MODELO	CÓDIGO – CODE – CÓDIGO
DEME-0	40.66C.201
DEME-2	40.66C.203
DEME-D25/120º	40.66C.204

dobradiças hinges bisagras



DEPE

dobradiças estampadas  
stamped hinges  
bisagras estampadas



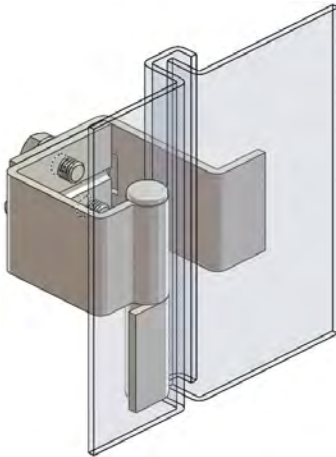
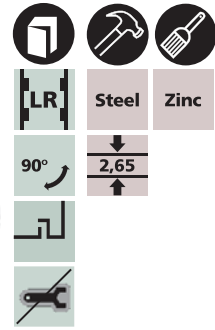
pino removível – removable pin – eje removible



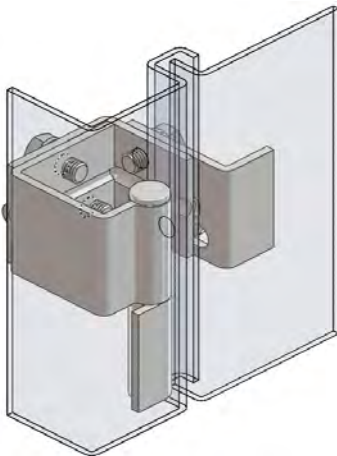
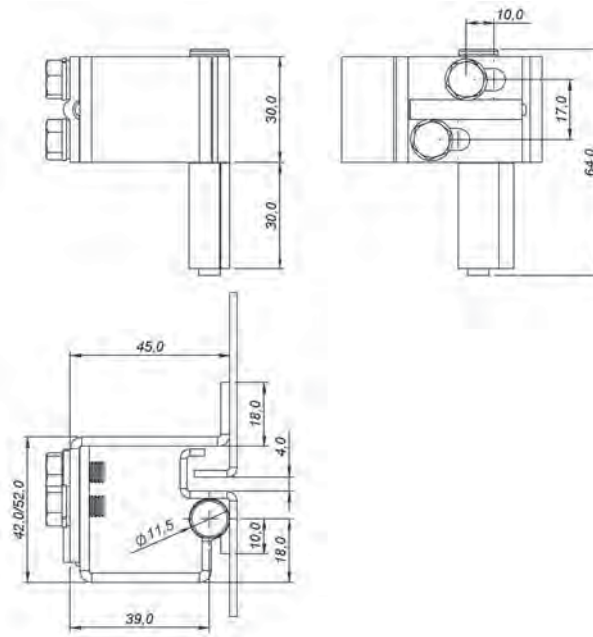
**Fixação**  
Por solda.

**Fixing**  
By welding.

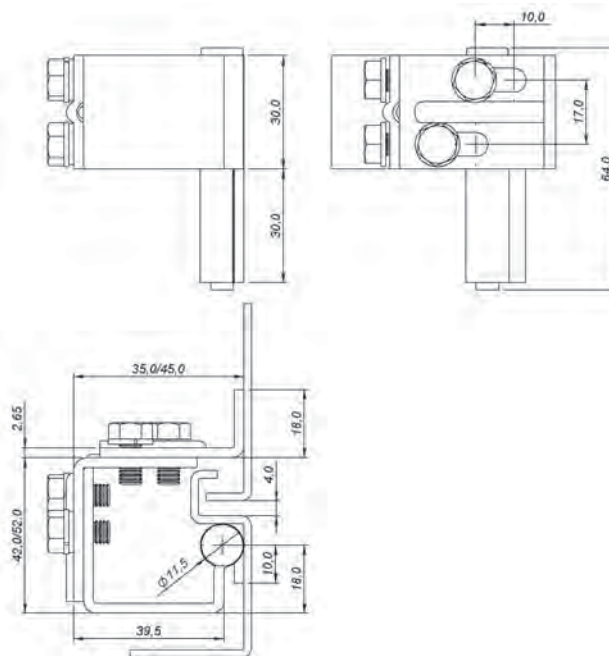
**Fijación**  
Por soldadura.



DEPE-RS



DEPE-RD



MODELO – MODEL – MODELO	CÓDIGO – CODE – CÓDIGO
DEPE-RS	40.866.202
DEPE-RD	40.866.204

dobradiças hinges bisagras

DEPF

dobradiças estampadas  
stamped hinges  
bisagras estampadas



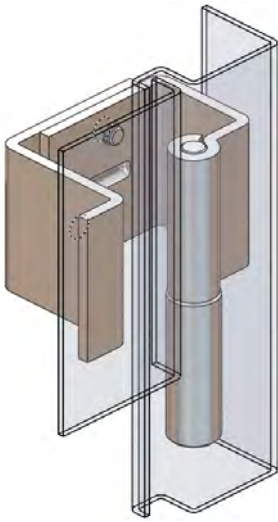
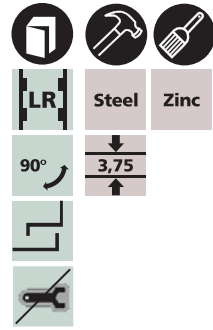
pino fixo – fixed pin – eje fijo

dobradiças  
hinges  
bisagras

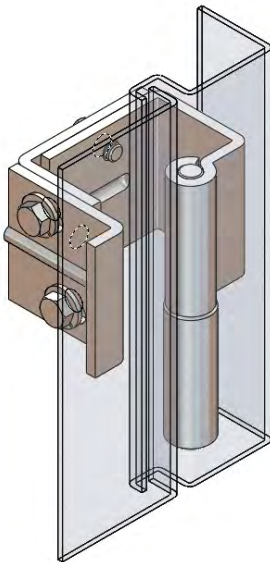
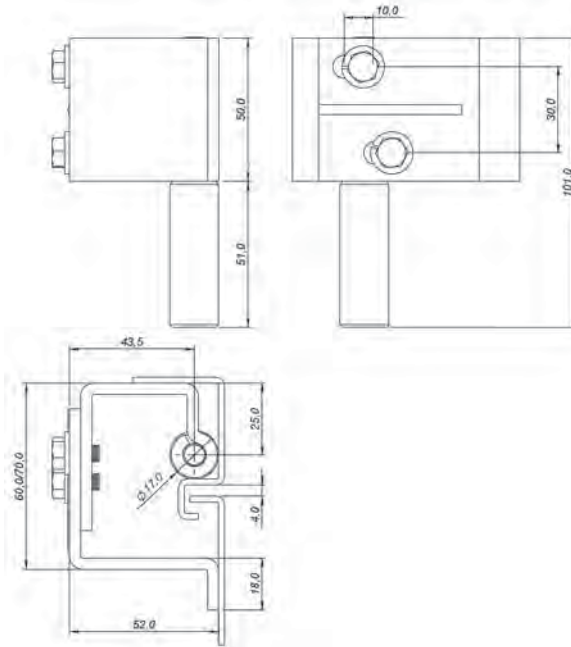
**Fixação**  
Por solda.

**Fixing**  
By welding.

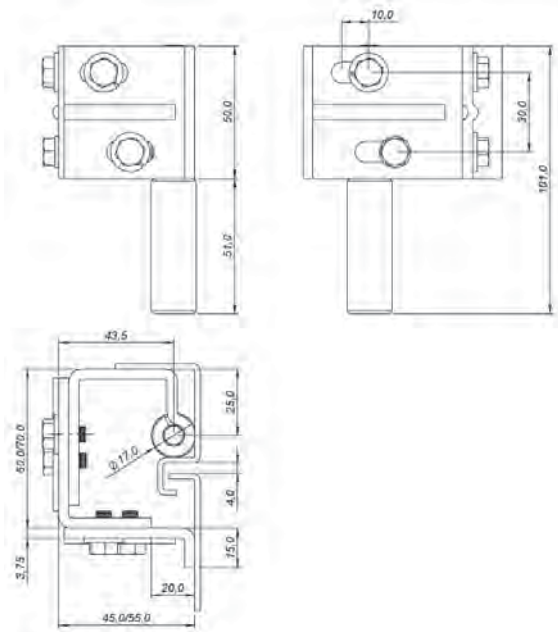
**Fijación**  
Por soldadura.



DEFP-RS



DEFP-RD



MODELO – MODEL – MODELO	CÓDIGO – CODE – CÓDIGO
DEPF-RS	40.766.202
DEPF-RD	40.766.204

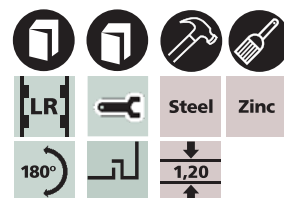
piano – piano – piano  
com furação – with hole – con perforación



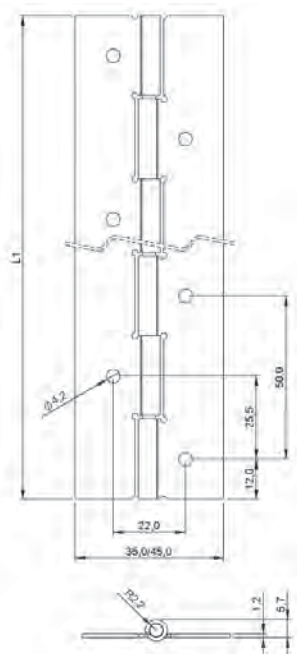
**Fixação**  
Por parafuso ou rebite.

**Fixing**  
By screw or rivet.

**Fijación**  
Por tornillo o remache.



DEPA-F



MODELO – MODEL – MODELO	CÓDIGO – CODE – CÓDIGO	L1 (mm)
DEPA-F35	40.966.201	150
	40.966.203	300
	40.966.205	600
	40.966.207	900
	40.966.209	1200
DEPA-F45	40.966.222	2000
	40.966.211	150
	40.966.213	300
	40.966.215	600
	40.966.217	900
40.966.219	1200	
40.966.224	2000	

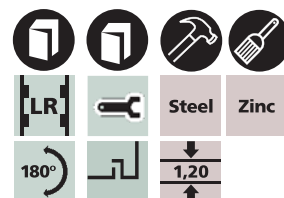
piano – piano – piano  
sem furação – without hole – sin perforación



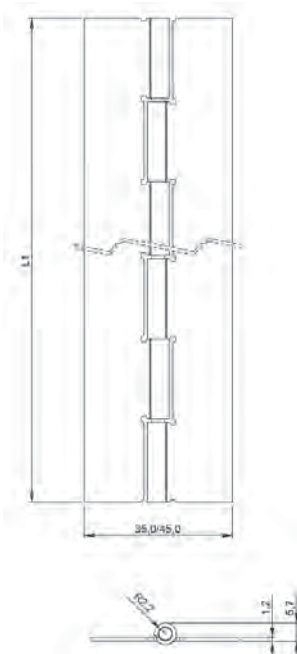
**Fixação**  
Por solda.

**Fixing**  
By welding.

**Fijación**  
Por soldadura.



DEPA-L



MODELO – MODEL – MODELO	CÓDIGO – CODE – CÓDIGO	L1 (mm)
DEPA-L35	40.966.202	150
	40.966.204	300
	40.966.206	600
	40.966.208	900
	40.966.210	1200
DEPA-L45	40.966.223	2000
	40.966.212	150
	40.966.214	300
	40.966.216	600
	40.966.218	900
40.966.220	1200	
40.966.225	2000	

DU12

dobradiças usinadas  
machined hinges  
bisagras mecanizadas



12mm – 12mm – 12mm



**Fixação**

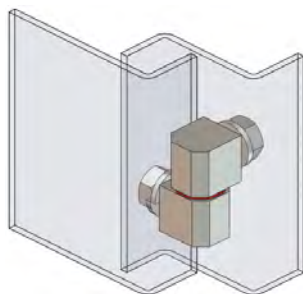
Por porca e arruela de pressão  
(incluso no fornecimento).

**Fixing**

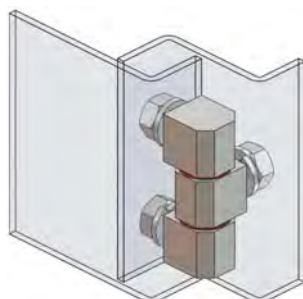
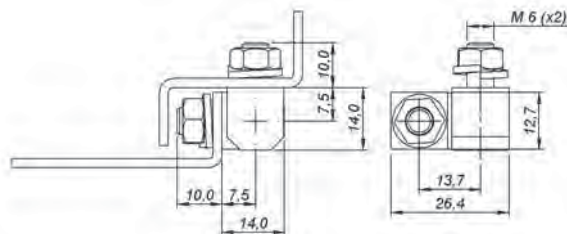
By nut and pressure washer  
(included).

**Fijación**

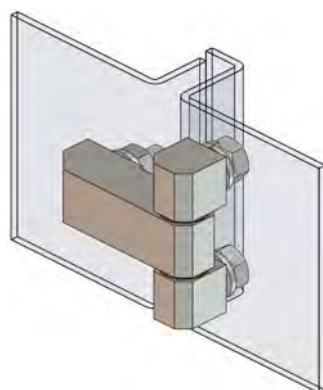
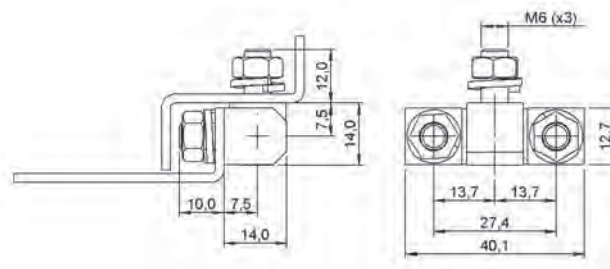
Por tuerca y arandela de presión  
(incluido en el suministro).



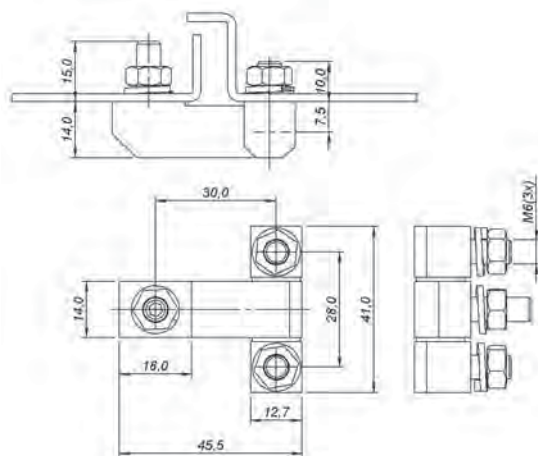
DU1208-D



DU1208-T



DU1230-T



MODELO – MODEL – MODELO	CÓDIGO – CODE – CÓDIGO
DU1208-D	42.1CC.L01
DU1208-T	42.2CC.L01
DU1230-T	42.3CC.L01

DU16

dobradiças usinadas  
machined hinges  
bisagras mecanizadas



16mm – 16mm – 16mm



**Fixação**

Por porca e arruela de pressão  
(incluso no fornecimento).

**Fixing**

By nut and pressure washer  
(included).

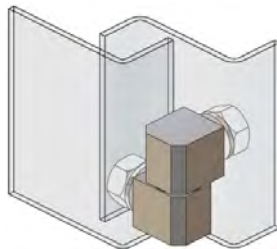
**Fijación**

Por tuerca y arandela de presión  
(incluido en el suministro).

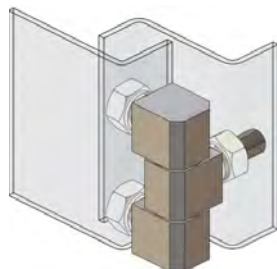
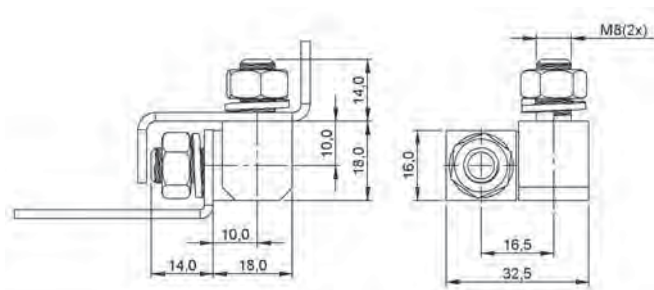


LR Steel Zinc

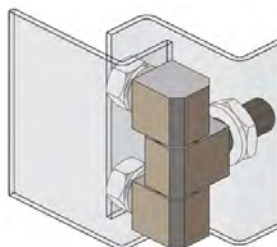
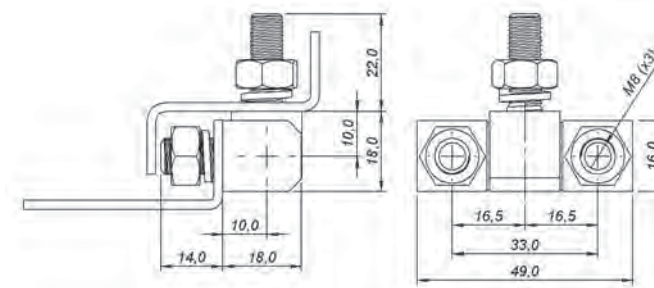
180°



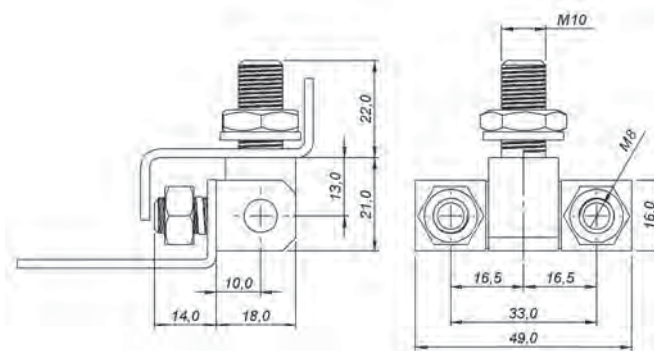
DU1610-D



DU1610-T



DU1613-T



MODELO – MODEL – MODELO	CÓDIGO – CODE – CÓDIGO
DU1610-D	41.566.201
DU1610-T	41.666.201
DU1613-T	41.766.201

dobradiças hinges bisagras

DU18

dobradiças usinadas  
machined hinges  
bisagras mecanizadas



18mm – 18mm – 18mm



**Fixação**

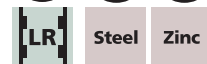
Por porca e arruela de pressão  
(incluso no fornecimento).

**Fixing**

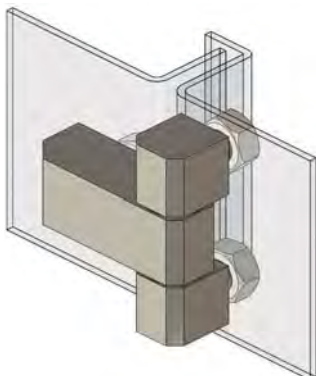
By nut and pressure washer  
(included).

**Fijación**

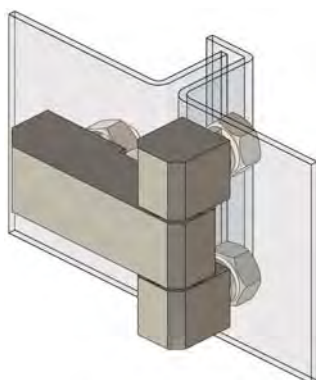
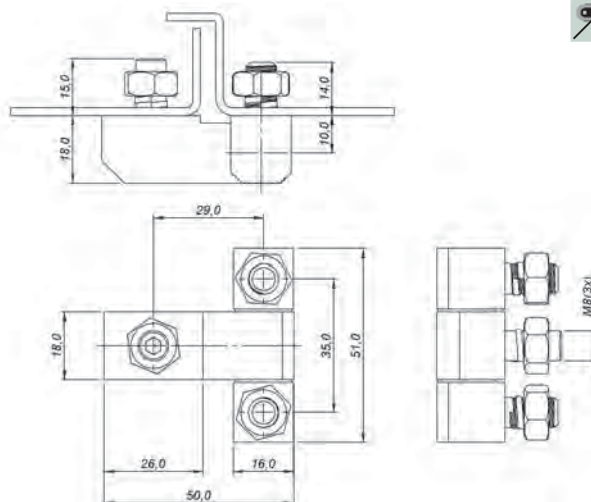
Por tuerca y arandela de presión  
(incluido en el suministro).



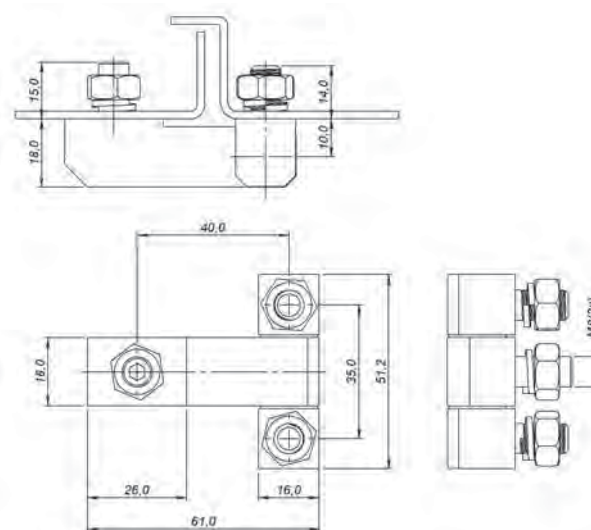
dobradiças hinged bisagras



DU1829-T



DU1840-T



MODELO – MODEL – MODELO	CÓDIGO – CODE – CÓDIGO
DU1829-T	41.866.201
DU1840-T	41.966.201