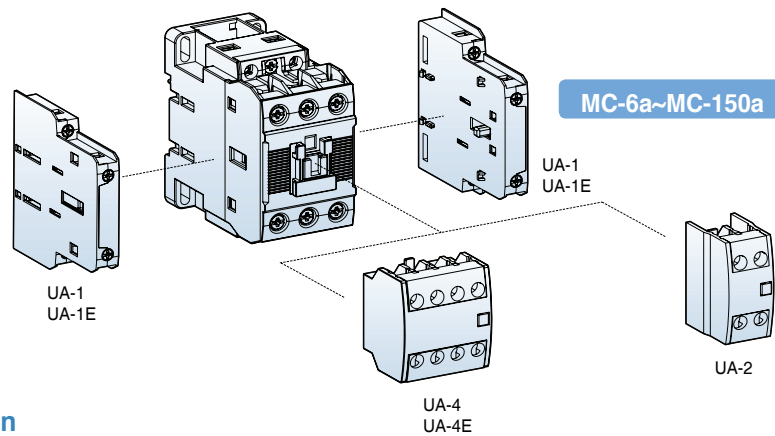


Auxiliary contact units

- 2 and 4 pole
- Side and front mountable
- Common use for Metasol contactors from MC-6a to MC-150a
- Auxiliary contact meet the requirements for mirror contacts in IEC 60947-4-1. Annex F (A mirror contact is an auxiliary NC contact that cannot be closed simultaneously with a NO main contact)



Selection

Type	Appearance	Pole	Composition		Contact arrangement	Mount	Weight
			NO	NC			
UA-1 UA-1E		2	1	1	<p>13(43) 21(31) 14(44) 22(32)</p>	Side	53g
UA-2		2	2 1 -	- 1 2	<p>53 63 51 63 51 61 54 64 52 64 52 62 2a 1a1b 2b</p>	Front	28g
UA-4 UA-4E		4	4 3 2 1 -	- 1 2 3 4	<p>53 63 73 83 53 61 73 83 53 61 71 83 54 64 74 84 54 62 74 84 54 62 72 84 4a 3a1b 2a2b 51 63 71 81 51 61 71 81 52 64 72 82 52 62 72 82 1a3b 4b</p>	Front	50g

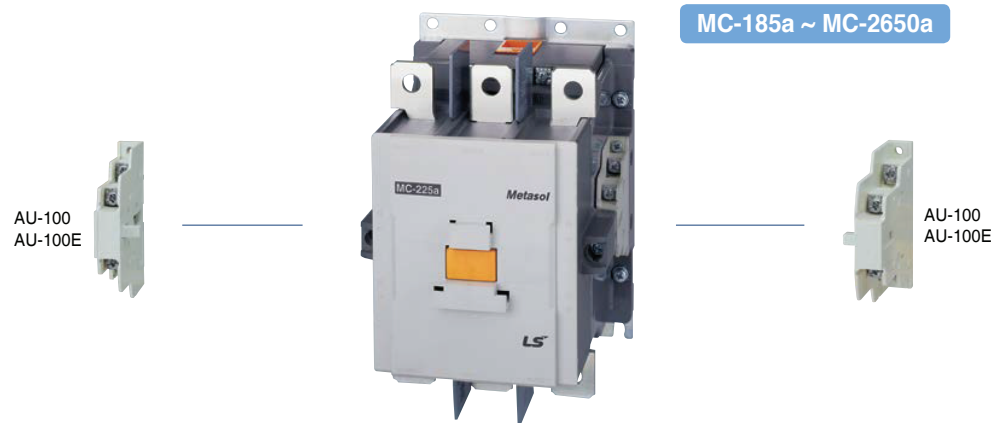
* UA-1 auxiliary contact can not be attached to the right side of 22AF product

Maximum combination of contact units

MC-6a~18a, 9b~22b (Max. 3a3b)	MC-32a~150a (Max. 4a4b)
UA-4(on front)+UA-1×1EA (1EA on one side)	UA-4(on front)+UA-1×2EA (1EA on both sides)
UA-2(on front)+UA-1×1EA (1EA on one side)	UA-2(on front)+UA-1×2EA (1EA on both sides)
UA-1×2EA (1EA on both sides)	UA-1×4EA (2EA on both sides) *For AC Coil

Auxiliary contact units

- 2 pole
- Side mountable
- Common use for Metasol contactors from MC-185a to MC-2650a
- Auxiliary contact meet the requirements for mirror contacts in IEC 60947-4-1. Annex F
(A mirror contact is an auxiliary NC contact that cannot be closed simultaneously with a NO main contact)



Selection

Type	Appearance	Pole	Composition		Contact arrangement	Mount	Weight
			a(NO)	b(NC)			
AU-100 AU-100E		2	1	1		Side	53g

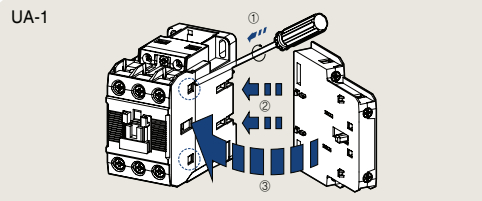
Maximum combination of contact units

MC-185a~2650a (Max. 4a4b)

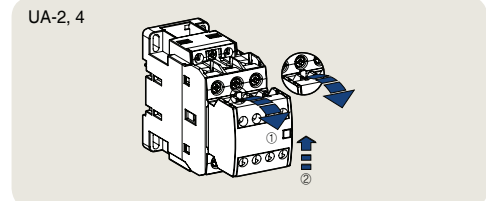
AU-100×4EA (2EA on both sides)

AU-100E×4EA (2EA on both sides)

Installation



To install side mounting unit remove the indicated part in the circle in the fig. first. And then fit each part as shown. To separate push forward and pull.



To install front mounting unit fit it on the upper part of the front of the contactor and push it down. To separate pull the lever of the unit and push the unit upward.

Rating

Type	UA-1	UA-2, 4	AU-100
Rated operation voltage (Ue)	600V	600V	600V
Rated insulation voltage (Ui)	1000V	690V	600V
Rated impulse withstand voltage (Uimp)	8kV	6kV	6kV
Rated frequency	50/60Hz	50/60Hz	50/60Hz
Contact sensibility			
Voltage	DC 24V	DC 24V	DC 24V
Current	DC 10mA	DC 10mA	DC 10mA
Rated thermal current (Ith, AC12 duty)	16A	16A	16A
Rated operation current AC15 duty	120V	6A	6A
	240V	3A	3A
	380V	1.9A	1.9A
	480V	1.5A	1.5A
	500V	1.4A	1.4A
	600V	1.2A	1.2A
Rated 1s	100A	-	100A
Short-time 0.5s	125A	-	120A
withstand current 0.1s	145A	-	140A
Electrical lifetime (mil. operations)	220V	0.25	0.25
	440V	0.25	0.25
Maximum operating cycles per hour	1800	1800	1800
Conductor size (Solid, stranded) (the max. number of conducts : 2)	AWG	18~10	18~10
	mm ²	1~2.5	1~2.5

Pneumatic timer



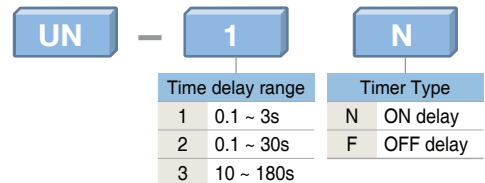
Air pressure timer

It is attached to the head-on of the magnetic contactor. It uses the principle of air pressure and it is delayed by the set time after the magnetic contactor is inserted and released and then the auxiliary contact of the Pneumatic timer is reversed



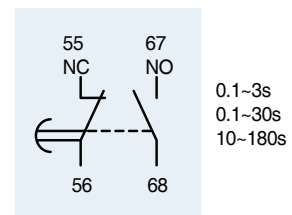
Combination with MC

Type	MC-6a~100a / MC-9b~22b					
	UN-1N	UN-2N	UN-3N	UN-1F	UN-2F	UN-3F
Standards	IEC60947-5-1, GB14048.5					
Certification	CCC, CE					
Degree of protection	IP20					
Temperature range	Storage -25°C ~ +60°C					
	Operation -5°C ~ +40°C					
Altitude	2,000m less					
Poles	1NO + 1NC					
Rated operating voltage	690V					
Rated insulation voltage	690V					
Frequency	50/60Hz					
Rated operation current(Ie)	A600(AC-15), Q600(DC-13)					
Ith(thermal Current)	10A					
Minimum switching current	10mA					
Irms rated making capacity	10 x Ie AC-15 acc. to IEC 60947-5-1					
Non overlap time	1.5ms					
Setting time	0.1~3s	0.1~30s	10~180s	0.1~3s	0.1~30s	10~180s
Operating time tolerance	±50% less					
Mechanical durability	2.5 mil. operations					



Note) Applicable MC: MC-6a ~ 100a, MC-9b ~ 22b, AC operation voltage

On Delay Timer Block(UN-N)



Off Delay Timer Block(UN-F)

