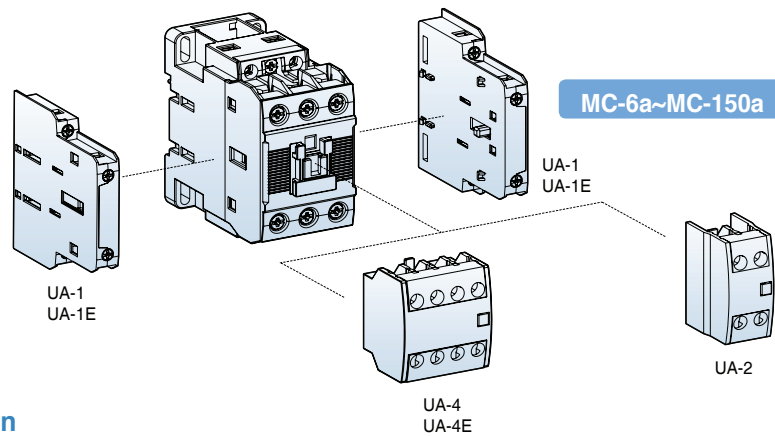


Auxiliary contact units

- 2 and 4 pole
- Side and front mountable
- Common use for Metasol contactors from MC-6a to MC-150a
- Auxiliary contact meet the requirements for mirror contacts in IEC 60947-4-1. Annex F (A mirror contact is an auxiliary NC contact that cannot be closed simultaneously with a NO main contact)



Selection

| Type | Appearance | Pole | Composition | | Contact arrangement | Mount | Weight |
|---------------|------------|------|-----------------------|-----------------------|---|-------|--------|
| | | | NO | NC | | | |
| UA-1 UA-1E | | 2 | 1 | 1 | <p>13(43) 21(31) 14(44) 22(32)</p> | Side | 53g |
| UA-2 | | 2 | 2 1 - | - 1 2 | <p>53 63 51 63 51 61 54 64 52 64 52 62 2a 1a1b 2b</p> | Front | 28g |
| UA-4 UA-4E | | 4 | 4 3 2 1 - | - 1 2 3 4 | <p>53 63 73 83 53 61 73 83 53 61 71 83 54 64 74 84 54 62 74 84 54 62 72 84 4a 3a1b 2a2b 51 63 71 81 51 61 71 81 52 64 72 82 52 62 72 82 1a3b 4b</p> | Front | 50g |

* UA-1 auxiliary contact can not be attached to the right side of 22AF product

Maximum combination of contact units

| MC-6a~18a, 9b~22b (Max. 3a3b) | MC-32a~150a (Max. 4a4b) |
|---|---|
| UA-4(on front)+UA-1×1EA (1EA on one side) | UA-4(on front)+UA-1×2EA (1EA on both sides) |
| UA-2(on front)+UA-1×1EA (1EA on one side) | UA-2(on front)+UA-1×2EA (1EA on both sides) |
| UA-1×2EA (1EA on both sides) | UA-1×4EA (2EA on both sides) *For AC Coil |

Auxiliary contact units

- 2 pole
- Side mountable
- Common use for Metasol contactors from MC-185a to MC-2650a
- Auxiliary contact meet the requirements for mirror contacts in IEC 60947-4-1. Annex F
(A mirror contact is an auxiliary NC contact that cannot be closed simultaneously with a NO main contact)



Selection

| Type | Appearance | Pole | Composition | | Contact arrangement | Mount | Weight |
|-------------------|------------|------|-------------|-------|---------------------|-------|--------|
| | | | a(NO) | b(NC) | | | |
| AU-100 AU-100E | | 2 | 1 | 1 | | Side | 53g |

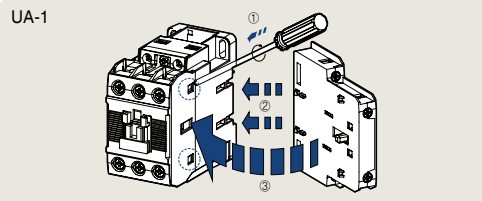
Maximum combination of contact units

MC-185a~2650a (Max. 4a4b)

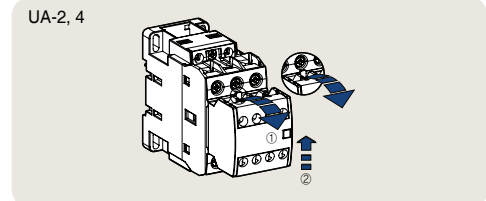
AU-100×4EA (2EA on both sides)

AU-100E×4EA (2EA on both sides)

Installation



To install side mounting unit remove the indicated part in the circle in the fig. first. And then fit each part as shown. To separate push forward and pull.



To install front mounting unit fit it on the upper part of the contactor and push it down. To separate pull the lever of the unit and push the unit upward.

Rating

| Type | UA-1 | UA-2, 4 | AU-100 |
|--|-----------------|---------|---------|
| Rated operation voltage (Ue) | 600V | 600V | 600V |
| Rated insulation voltage (Ui) | 1000V | 690V | 600V |
| Rated impulse withstand voltage (Uimp) | 8kV | 6kV | 6kV |
| Rated frequency | 50/60Hz | 50/60Hz | 50/60Hz |
| Contact sensibility | | | |
| Voltage | DC 24V | DC 24V | DC 24V |
| Current | DC 10mA | DC 10mA | DC 10mA |
| Rated thermal current (Ith, AC12 duty) | 16A | 16A | 16A |
| Rated operation current (AC15 duty) | 120V | 6A | 6A |
| | 240V | 3A | 3A |
| | 380V | 1.9A | 1.9A |
| | 480V | 1.5A | 1.5A |
| | 500V | 1.4A | 1.4A |
| | 600V | 1.2A | 1.2A |
| Rated 1s withstand current | 0.2A | 0.1A | 0.2A |
| Rated 0.5s withstand current | 100A | - | 100A |
| Short-time 0.5s withstand current | 125A | - | 120A |
| 0.1s withstand current | 145A | - | 140A |
| Electrical lifetime (mil. operations) | 220V | 0.25 | 0.25 |
| | 440V | 0.25 | 0.25 |
| Maximum operating cycles per hour | 1800 | 1800 | 1800 |
| Conductor size (Solid, stranded) | AWG | 18-10 | 18-10 |
| | mm ² | 1-2.5 | 1-2.5 |

Pneumatic timer



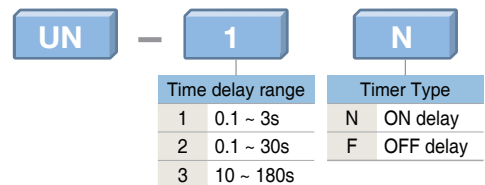
Air pressure timer

It is attached to the head-on of the magnetic contactor. It uses the principle of air pressure and it is delayed by the set time after the magnetic contactor is inserted and released and then the auxiliary contact of the Pneumatic timer is reversed



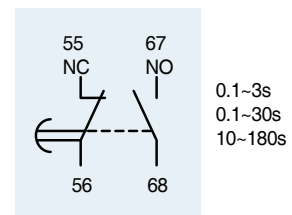
Combination with MC

| Type | MC-6a~100a / MC-9b~22b | | | | | |
|-----------------------------|-------------------------------------|---------|---------|--------|---------|---------|
| | UN-1N | UN-2N | UN-3N | UN-1F | UN-2F | UN-3F |
| Standards | IEC60947-5-1, GB14048.5 | | | | | |
| Certification | CCC, CE | | | | | |
| Degree of protection | IP20 | | | | | |
| Temperature range | -25°C ~ +60°C | | | | | |
| | Storage: -5°C ~ +40°C | | | | | |
| Altitude | 2,000m less | | | | | |
| Poles | 1NO + 1NC | | | | | |
| Rated operating voltage | 690V | | | | | |
| Rated insulation voltage | 690V | | | | | |
| Frequency | 50/60Hz | | | | | |
| Rated operation current(Ie) | A600(AC-15), Q600(DC-13) | | | | | |
| Ith(thermal Current) | 10A | | | | | |
| Minimum switching current | 10mA | | | | | |
| Irms rated making capacity | 10 x Ie AC-15 acc. to IEC 60947-5-1 | | | | | |
| Non overlap time | 1.5ms | | | | | |
| Setting time | 0.1~3s | 0.1~30s | 10~180s | 0.1~3s | 0.1~30s | 10~180s |
| Operating time tolerance | ±50% less | | | | | |
| Mechanical durability | 2.5 mil. operations | | | | | |



Note) Applicable MC: MC-6a ~ 100a, MC-9b ~ 22b, AC operation voltage

On Delay Timer Block(UN-N)



Off Delay Timer Block(UN-F)

