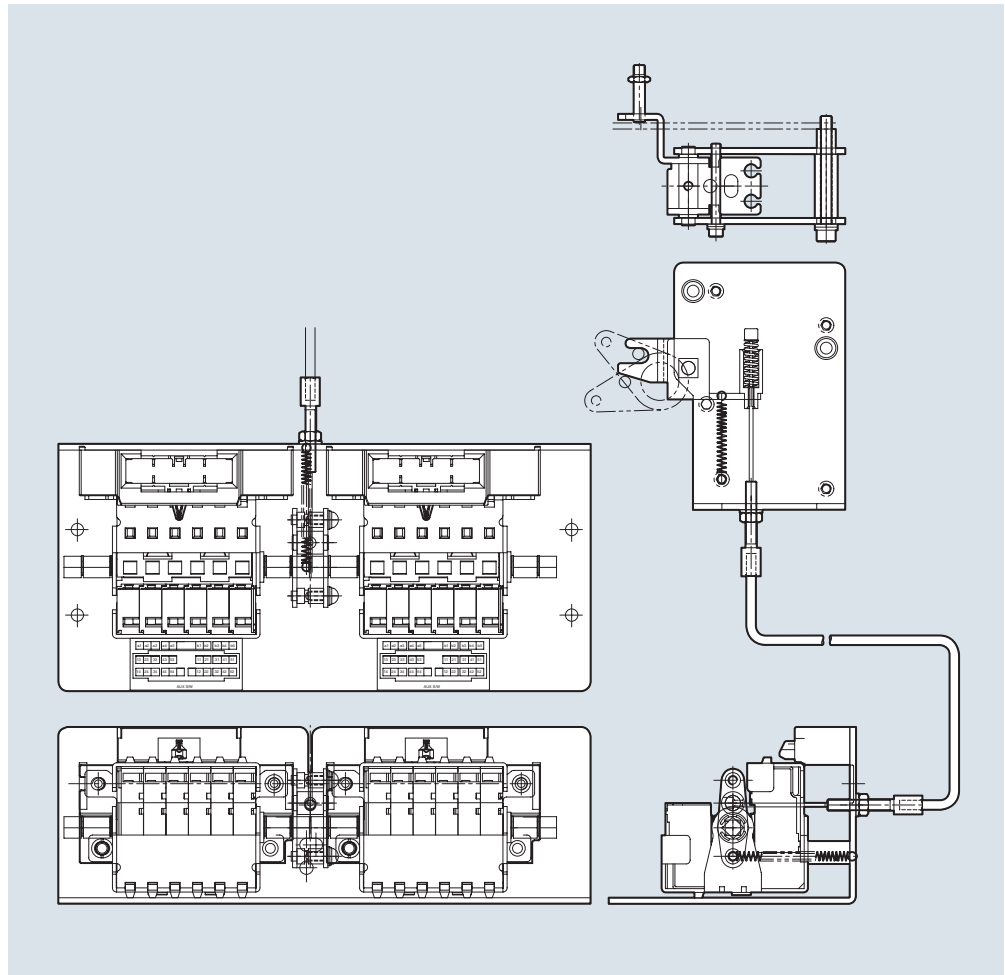
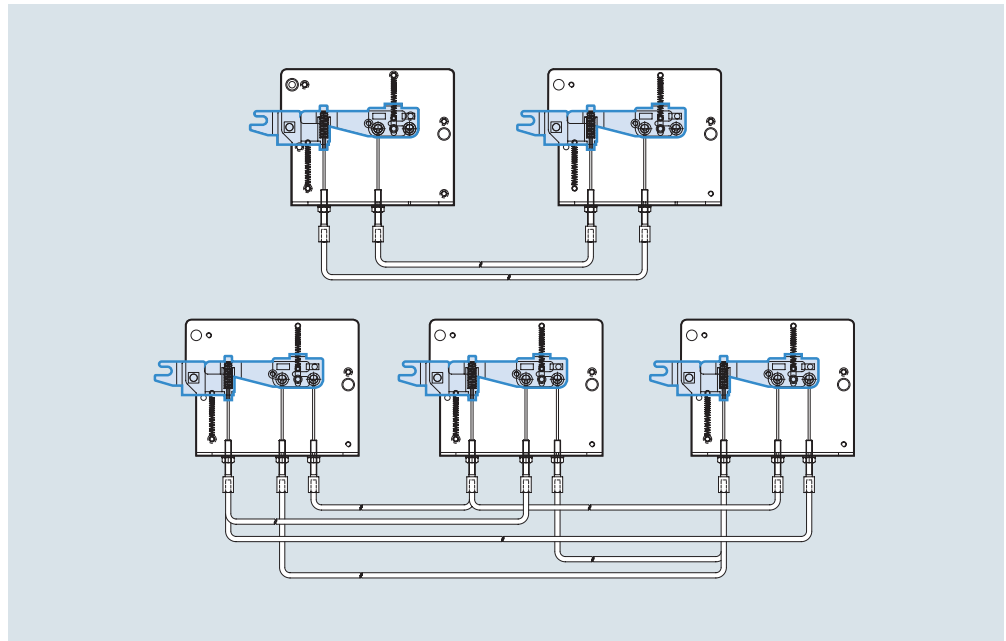
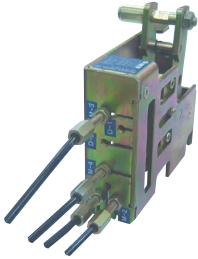


## Mechanical Operated Cell Switch [MOC]



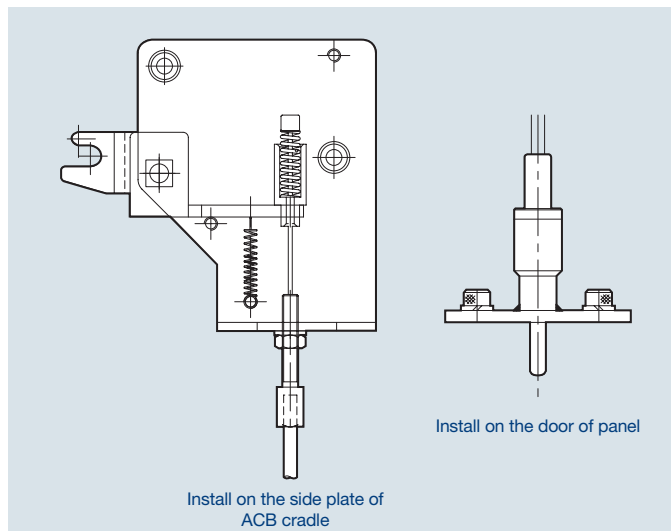
- It is the contact (10a10b) which displays the ON/OFF condition of ACB.  
It mechanically operates only when the breaker is "CONNECTED" position.  
A standard type and a high capacity type is available.
- The contact capacity is as same as the ratings of aux. contacts.
- When MOC link is installed to cradle, MOC can be equipped with the inside of panel.

## Mechanical Interlock [MI]



- It is used to interlock closing and trip between two or three breakers mechanically so as to prevent unintended operation at the same time.
- Wire type interlock can be applied upto 3 breakers

## Door Interlock [DI]



- It is a safety device which does not allow the panel door to open when a circuit breaker is in the "ON" position.