

CAJA DE REGISTRO OVAL

Para tubo EMT de pared delgada (thinwall)

INYECTADOS
AWELT®


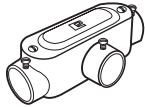

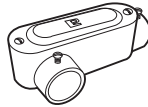

CARACTERÍSTICAS



- **Aluminio Inyectado a Presión (Diecast)**
- **Pintura Electrostática Termoendurecida.**
- Se conecta el tubo directamente a la caja.
- No necesita conectores.
- Menor tiempo de instalación.
- Menor costo de la tubería EMT de pared delgada.



**Fabricación e Integración 100% Nacional
HECHO EN MÉXICO**

Manufacturing and Integration 100% National.
Made in Mexico

MEDIDA					
	CÓDIGO				
1/2"	28.11.3473.TC	28.11.3474.TC	28.11.3476.TC	28.11.3477.TC	28.11.3475.TC
3/4"	28.11.0665.TC	28.11.0695.TC	28.11.0675.TC	28.11.0685.TC	28.11.0662.TC
1"	28.11.0666.TC	28.11.0696.TC	28.11.0676.TC	28.11.0686.TC	28.11.0663.TC
1 1/4"	28.11.0667.TC	28.11.0697.TC	28.11.0677.TC	28.11.0687.TC	28.11.2566.TC
1 1/2"	28.11.0668.TC	28.11.0698.TC	28.11.0678.TC	28.11.0688.TC	28.11.2685.TC
2"	28.11.0669.TC	28.11.0699.TC	28.11.0679.TC	28.11.0689.TC	28.11.2719.TC

MEDIDA		
	CÓDIGO	
1/2"	28.02.2991	28.05.3010
3/4"	28.02.0356	28.05.0372
1"	28.02.0357	28.05.0365
1 1/4"	28.02.0363	28.05.0370
1 1/2"	28.02.0363	28.05.0370
2"	28.02.0373	28.05.0366

www.rawelt.com.mx
VENTAS: 800 7117 200 (PARA MÉXICO)

RAWELT, S.A. de C.V.
Torreón, Coah., México
Tel.: 871 747 4747
E-mail: torreon@rawelt.com.mx

INYECTADOS
RAWELT[®]
Una División del Grupo REVUELTA 

2.1 - CAJA OVAL. CON TORNILLO. CON TAPA. PARA TUBO EMT (THINWALL).

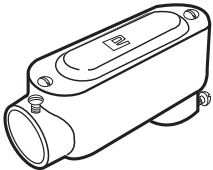
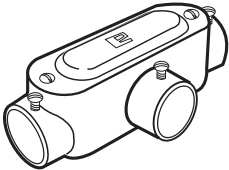
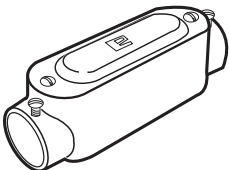
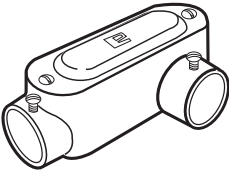
2.1 - OVAL CONDUIT BODIES. SETSCREW. WITH COVER. FOR USE WITH EMT CONDUIT.

- Material:
 - Cuerpo: Aluminio inyectado a presión.
 - Tapa: Lámina de Aluminio.
 - Tornillos: Galvanizados.
- Acabados: Pintura electrostática epoxica/poliéster polimerizada.
- Para usarse con tubo EMT (Thinwall).
- Tapa y tornillos ensamblados.
- Fabricación en base a: CAN/CSA-C22.2 No. 18-92

- Material:
 - Body: Diecast aluminum.
 - Cover: Sheet aluminum.
 - Screws: Galvanized steel.
- Finish: Electrostatic powder epoxy/poliéster coating.
- For use with EMT conduit (Thinwall).
- Cover and screws assembled.
- Manufactured in compliance with: CAN/CSA-C22.2 No. 18-92



USAR No. DE CODIGO PARA HACER PEDIDOS / TO ORDER USE CODE NUMBER

Figura Figure	Catalogo Catalog	Codigo Code	Medida nominal Hub size		Volumen Volume		Peso x 100 pzas. Weight x 100 pcs.		Unit Ctn. Pzas. Pcs.	Ship Ctn. Pzas. Pcs.	Std. Pkg. Pzas. Pcs.	Num. y calib. max. conduct. Max. No. and sze. conduct.
			mm	inch	cm ³	cu. in	kg	Lb				
OLB 	* OLB-3473-TC	28.11.3473.TC	12.7	1/2	65.5	4.0	13.3	29.3	10	40	46	3, #8 AWG
	* OLB-0088-TC	28.11.0665.TC	19.0	3/4	106.4	6.5	16.8	37.1	5	35	30	3, #6 AWG
	OLB-0093-TC	28.11.0666.TC	25.4	1	180.1	11.0	23.0	50.7	5	20	40	3, #6 AWG
	OLB-0098-TC	28.11.0667.TC	31.8	1 1/4	512.6	31.3	52.9	116.7	2	8	15	3, #2 AWG
	OLB-0078-TC	28.11.0668.TC	38.1	1 1/2	529.0	32.3	56.4	124.4	2	8	15	3, #1/0
	OLB-0306-TC	28.11.0669.TC	50.8	2	1195.7	73.0	114.8	253.1	1	4	6	3, #3/0
OT 	* OT-3474-TC	28.11.3474.TC	12.7	1/2	65.5	4.0	14.3	31.5	10	40	42	3, #8 AWG
	* OT-0087-TC	28.11.0695.TC	19.0	3/4	114.6	7.0	19.3	42.6	5	40	20	3, #6 AWG
	OT-0092-TC	28.11.0696.TC	25.4	1	180.1	11.0	23.0	50.76	5	20	32	3, #4 AWG
	OT-0097-TC	28.11.0697.TC	31.8	1 1/4	496.3	30.3	52.9	116.7	2	8	15	3, #2 AWG
	OT-0077-TC	28.11.0698.TC	38.1	1 1/2	512.6	31.3	65.9	145.4	2	8	15	3, #2 AWG
	OT-0307-TC	28.11.0699.TC	50.8	2	1126.9	68.8	108.8	240.0	1	4	6	3, #1 AWG
OC 	* OC-3475-TC	28.11.3475.TC	12.7	1/2	65.5	4.0	13.3	29.3	10	70	63	3, #8 AWG
	* OC-0330-TC	28.11.0662.TC	19.0	3/4	119.5	7.3	15.8	34.9	5	50	36	3, #6 AWG
	OC-0331-TC	28.11.0663.TC	25.4	1	185.0	11.3	21.5	47.4	5	20	46	3, #4 AWG
	OC-2625-TC	28.11.2566.TC	31.8	1 1/4	455.9	27.8	51.5	113.4	2	8	16	3, #2 AWG
	OC-2626-TC	28.11.2685.TC	38.1	1 1/2	488.7	29.8	57.0	125.5	2	8	16	3, #2 AWG
	OC-2627-TC	28.11.2719.TC	50.8	2	1087.3	66.3	104.5	230.0	1	4	9	3, #2/0
OLL 	* OLL-3476-TC	28.11.3476.TC	12.7	1/2	65.5	4.0	13.8	30.4	10	40	52	3, #8 AWG
	* OLL-0089-TC	28.11.0675.TC	19.0	3/4	111.3	6.8	17.3	38.2	5	40	24	3, #6 AWG
	OLL-0094-TC	28.11.0676.TC	25.4	1	185.0	11.3	22.5	49.6	5	20	40	3, #4 AWG
	OLL-0099-TC	28.11.0677.TC	31.8	1 1/4	512.6	31.3	49.9	110.1	2	8	15	3, #2 AWG
	OLL-0079-TC	28.11.0678.TC	38.1	1 1/2	537.2	32.8	57.4	126.6	2	8	15	3, #1/0
	OLL-0323-TC	28.11.0679.TC	50.8	2	1208.8	73.8	122.3	269.7	1	4	6	3, #4/0

Especificaciones sujetas a cambio sin previo aviso. Specifications are subject to change without notice.

2.1 - CAJA OVAL. CON TORNILLO. CON TAPA. PARA TUBO EMT (THINWALL).

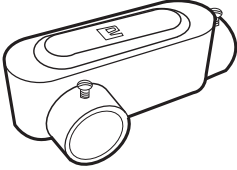
Hoja: 2 / 3
Page:

2.1 - OVAL CONDUIT BODIES. SETSCREW. WITH COVER. FOR USE WITH EMT CONDUIT.

FICHA TECNICA / TECHNICAL DATA

007-RW-152

USAR No. DE CODIGO PARA HACER PEDIDOS / TO ORDER USE CODE NUMBER

Figura Figure	Catalogo Catalog	Codigo Code	Medida nominal Hub size		Volumen Volume		Peso x 100 pzas. Weight x 100 pcs.		Unit Ctn. Pzas. Pcs.	Ship Ctn. Pzas. Pcs.	Std. Pkg. Pzas. Pcs.	Num. y calib. max. conduct. Max. No. and sze. conduct.
			mm	inch	cm ³	cu. in	kg	Lb				
	* OLR-3477-TC	28.11.3477.TC	12.7	1/2	65.5	4.0	14.3	31.5	10	40	52	3, #8 AWG
	* OLR-0090-TC	28.11.0685.TC	19.0	3/4	119.5	7.3	16.8	37.1	5	40	24	3, #6 AWG
	OLR-0095-TC	28.11.0686.TC	25.4	1	185.0	11.3	23.0	50.7	5	20	40	3, #4 AWG
	OLR-0100-TC	28.11.0687.TC	31.8	1 1/4	512.6	31.3	52.4	115.6	2	8	15	3, #2 AWG
	OLR-0080-TC	28.11.0688.TC	38.1	1 1/2	540.5	33.0	56.9	125.5	2	8	15	3, #1/0
	OLR-0320-TC	28.11.0689.TC	50.8	2	1203.9	73.5	124.8	275.2	1	4	6	3, #4/0

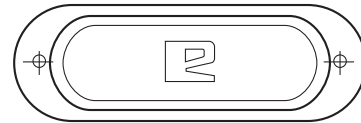
*Certificaciones / Compliances:  Expediente/File No. LR 105795-3

TAPAS

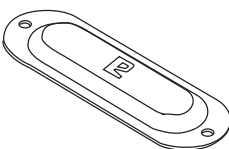
COVERS

- Lámina de aluminio troquelada.
- Tornillos galvanizados incluidos

- Sheet aluminum.
- Galvanized screws included.

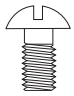
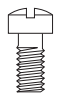


USAR No. DE CODIGO PARA HACER PEDIDOS / TO ORDER USE CODE NUMBER

Figura Figure	Catalogo Catalog	Codigo Code	Medida nominal Hub size		Espesor Thickness		Peso x 100 pzas. Weight x 100 pcs.		Pqt. Unit Pzas. Pcs.	Unit Ctn. Pzas. Pcs.	Ship Ctn. Pzas. Pcs.	Std Pkg. Pzas. Pcs.
			mm	inch	mm	inch	kg	Lb				
	TO-2991	28.02.2991	12.7	1/2	1.7	.067	1.8	3.9	10	60	600	1500
	TO-0356	28.02.0356	19.0	3/4	1.7	.067	2.0	4.4	10	60	600	1500
	TO-0357	28.02.0357	25.4	1	1.7	.067	2.7	5.9	10	40	400	1000
	TO-0363	28.02.0363	31.8	1 1/4	1.7	.067	5.0	11.0	10	20	200	500
	TO-0363	28.02.0363	38.1	1 1/2	1.7	.067	5.0	11.0	10	20	200	500
	TO-0373	28.02.0373	50.8	2	1.7	.067	8.5	18.7	10	40	160	300

TORNILLOS CAUTIVOS DE ACERO INOXIDABLE (Opcional) / CAPTIVE STAINLESS STEEL SCREWS (Optional)
Se surten en bolsa aparte Supplied separately

USAR No. DE CODIGO PARA HACER PEDIDOS / TO ORDER USE CODE NUMBER

Figura Figure	Descripción Description	Codigo Code	Medida / Size			
			Largo/Length mm	inch		
	TORNILLO CAUTIVO INOXIDABLE	52.05.0196.IX	TOR. # 8 - 32 NC		9.52	3/8
	CAPTIVE STAINLESS STEEL SCREW	52.05.0216.IX	TOR. # 12 - 24 NC		9.52	3/8
		52.05.0198.IX	TOR. 7.9 - 18 NC		15.87	5/8
	TORNILLO CAB. FILLISTER	52.05.0041.Z	TOR. # 8 - 32 NC		9.52	3/8
	FILLISTER SCREW	52.05.0040.Z	TOR. 4.76 - 24 NC		9.52	3/8

Certificaciones: / Compliances:  Expediente No. LR 105795 - 3
File No.

Especificaciones sujetas a cambio sin previo aviso. Specifications are subject to change without notice.

RAWELT, S.A. de C.V.

 INYECTADOS
Una División del Grupo REVUELTA 

2.1 - CAJA OVAL. CON TORNILLO. CON TAPA. PARA TUBO EMT (THINWALL).

Hoja: 3 / 3
Page:

2.1 - OVAL CONDUIT BODIES. SETSCREW. WITH COVER. FOR USE WITH EMT CONDUIT.

FICHA TECNICA / TECHNICAL DATA

007-RW-152

EMPAQUE


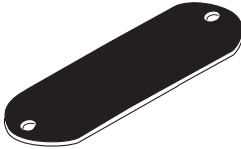
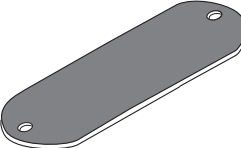
GASKET

• Material: Neopreno y Accopac.

• Material: Neoprene and Accopac.



USAR No. DE CODIGO PARA HACER PEDIDOS / TO ORDER USE CODE NUMBER

Figura Figure	Catalogo Catalog	Codigo Code	Medida nominal Hub size		Espesor Thickness		Peso x 100 pzas. Weight x 100 pcs.		Pqt. Unit. Pzas. Pcs.	Unit Ctn. Pzas. Pcs.	Ship Ctn. Pzas. Pcs.	Std. Pkg. Pzas. Pcs.
			mm	inch	mm	inch	kg	Lb				
 NEOPRENO 1.6 NEOPRENE 1/16	EO-3010	28.05.3010	12.7	1/2	1.6	1/16	1.0	2.2	100			
	EO-0372	28.05.0372	19.0	3/4	1.6	1/16	1.1	2.4	100			
	EO-0365	28.05.0365	25.4	1	1.6	1/16	1.4	3.1	100			
	EO-0370	28.05.0370	31.8	1 1/4	1.6	1/16	2.6	5.7	50			
	EO-0370	28.05.0370	38.1	1 1/2	1.6	1/16	2.6	5.7	50			
	EO-0366	28.05.0366	50.8	2	1.6	1/16	4.7	10.3	25			
 NEOPRENO 0.8 NEOPRENE 1/32	EO-3011	28.07.3011	12.7	1/2	0.8	1/32	0.3	0.7	100			
	EO-0528	28.07.0528	19.0	3/4	0.8	1/32	0.4	0.9	100			
	EO-0529	28.07.0529	25.4	1	0.8	1/32	0.5	1.1	100			
	EO-0530	28.07.0530	31.8	1 1/4	0.8	1/32	1.0	2.2	50			
	EO-0530	28.07.0530	38.1	1 1/2	0.8	1/32	1.0	2.2	50			
	EO-0531	28.07.0531	50.8	2	0.8	1/32	1.9	4.2	25			
 ACCOPAC 0.8 ACCOPAC 1/32	EOA-3012	28.06.3012	12.7	1/2	0.8	1/32	0.2	0.4	100			
	EOA-0520	28.06.0520	19.0	3/4	0.8	1/32	0.2	0.4	100			
	EOA-0521	28.06.0521	25.4	1	0.8	1/32	0.3	0.6	100			
	EOA-0522	28.06.0522	31.8	1 1/4	0.8	1/32	0.6	1.3	50			
	EOA-0522	28.06.0522	38.1	1 1/2	0.8	1/32	0.6	1.3	50			
	EOA-0523	28.06.0523	50.8	2	0.8	1/32	1.0	2.2	25			

Certificaciones / Compliances:



Expediente/File No. LR 105795-1

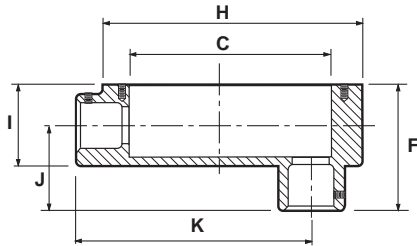
Especificaciones sujetas a cambio sin previo aviso. Specifications are subject to change without notice.

RAWELT, S.A. de C.V.

RAWELT® INYECTADOS
Una División del Grupo REVUELTA

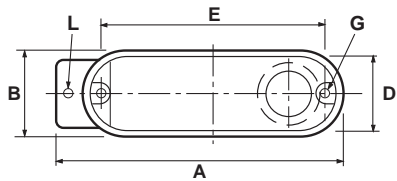
2.1- CAJA OVAL "S". CON TORNILLO. PARA TUBO EMT. **DIMENSIONES.**

2.1- OVAL CONDUIT BODIES "S". SETSCREW. FOR USE WITH EMT CONDUIT. **DIMENSIONS.**



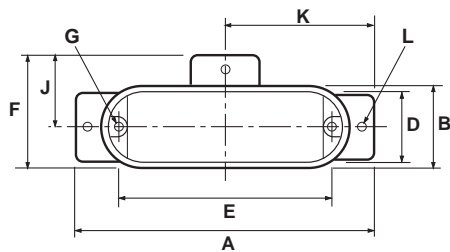
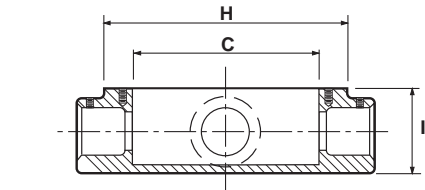
TIPO / TYPE **OLB**

MEDIDA SIZE		A		B		C		D		E		F		G		H		I		J		K		L	
		in	mm	in	mm	in	mm	in	mm	in	mm	in	mm	in	mm	in	mm	in	mm	in	mm	in	mm	in	mm
12.7 S	1 / 2 S	4.33	110	1.32	33.5	3.23	82	1.08	27.5	3.50	89	2.05	52	8-32	4.17	3.94	100	1.38	35	1.26	32	3.58	91	8-32	4.17
19.0	3 / 4	5.05	128.5	1.47	37.5	3.77	96	1.27	32.5	4.11	104.5	2.32	59	8-32	4.17	4.60	117	1.59	40.5	1.37	35	4.01	102	3/16	4.76
25.4	1	5.76	146.5	1.77	45	4.31	109.5	1.55	39.5	4.82	122.5	2.48	63	8-32	4.17	5.37	136.5	1.77	45	1.45	37	4.64	118	3/16	4.76
31.8	1 1/4	7.72	196	2.48	63	6.04	153.5	2.20	56	6.53	166	3.30	84	12-24	5.49	7.24	184	2.48	63	1.89	48	6.22	158	1/4	6.35
38.1	1 1/2	7.72	196	2.48	63	6.04	153.5	2.20	56	6.53	166	3.58	91	12-24	5.49	7.26	184.5	2.65	67.5	2.12	54	6.22	158	1/4	6.35
50.8	2	9.56	243	3.11	79	8.14	207	2.81	71.6	8.50	216	4.42	112.5	12-24	5.49	9.40	239	3.42	87	2.36	60	7.95	202	1/4	6.35



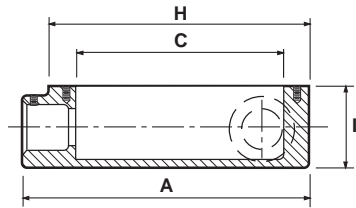
TIPO / TYPE **OT**

MEDIDA SIZE		A		B		C		D		E		F		G		H		I		J		K		L	
		in	mm	in	mm	in	mm	in	mm	in	mm	in	mm	in	mm	in	mm	in	mm	in	mm	in	mm	in	mm
12.7 S	1 / 2 S	4.76	121	1.32	33.5	3.23	82	1.08	27.5	3.50	89	1.99	50.5	8-32	4.17	3.90	99	1.38	35	1.34	34	2.38	60.5	8-32	4.17
19.0	3 / 4	5.43	138	1.47	37.5	3.74	95	1.27	32.5	4.09	104	2.28	58	8-32	4.17	4.58	116.5	1.61	41	1.53	39	2.71	69	3/16	4.76
25.4	1	6.14	156	1.77	45	4.33	110	1.57	40	4.82	122.5	2.53	64.5	8-32	4.17	5.35	136	1.75	44.5	1.61	41	3.07	78	3/16	4.76
31.8	1 1/4	8.22	209	2.48	63	5.96	151.5	2.20	56	6.53	166	3.44	87.5	12-24	5.49	7.26	184.5	2.71	69	2.16	55	4.11	104.5	1/4	6.35
38.1	1 1/2	8.22	209	2.48	63	5.94	151	2.20	56	6.53	166	3.44	87.5	12-24	5.49	7.28	185	2.69	68.5	2.16	55	4.11	104.5	1/4	6.35
50.8	2	9.92	252	3.13	79.5	7.63	194	2.82	71.8	8.52	216.5	4.46	113.5	12-24	5.49	9.42	239.5	3.44	87.5	2.44	62	4.96	126	1/4	6.35



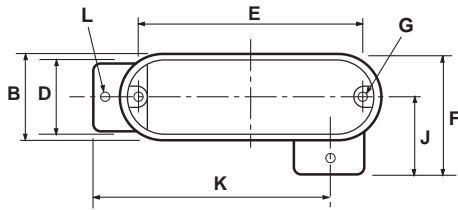
2.1- CAJA OVAL "S". CON TORNILLO. PARA TUBO EMT. DIMENSIONES.

2.1- OVAL CONDUIT BODIES "S". SETSCREW. FOR USE WITH EMT CONDUIT. DIMENSIONS.



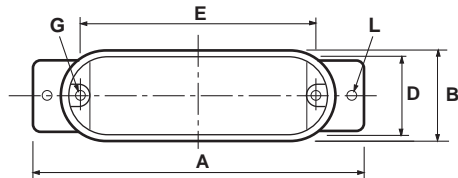
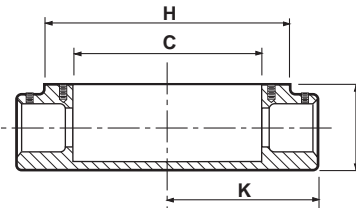
TIPO / TYPE OLL

MEDIDA SIZE	A		B		C		D		E		F		G		H		I		J		K		L	
	in	mm	in	mm	in	mm	in	mm	in	mm	in	mm	in	mm	in	mm	in	mm	in	mm	in	mm	in	mm
12.7 S 1/2 S	4.33	110	1.32	33.5	3.23	82	1.08	27.5	3.50	89	1.99	50.5	8-32	4.17	3.90	99	1.38	35	1.34	34	3.38	86	8-32	4.17
19.0 3/4	5.0	127	1.49	38	3.72	94.5	1.29	33	4.09	104	2.24	57	8-32	4.17	4.60	117	1.59	40.5	1.51	38.5	3.89	99	3/16	4.76
25.4 1	5.74	146	1.77	45	4.25	108	1.57	40	4.82	122.5	1.77	45	8-32	4.17	5.37	136.5	1.77	45	1.61	41	4.60	117	3/16	4.76
31.8 1 1/4	7.71	196	2.46	62.5	6.08	154.5	2.18	55.5	6.57	167	3.28	83.5	12-24	5.49	7.26	184.5	2.46	62.5	2.04	52	6.14	156	1/4	6.35
38.1 1 1/2	7.71	196	2.46	62.5	6.02	153	2.18	55.5	6.53	166	3.28	83.5	12-24	5.49	7.26	184.5	2.65	67.5	2.04	52	6.25	159	1/4	6.35
50.8 2	9.74	247.5	3.12	79.5	7.87	200	2.83	72	8.54	217	4.09	104	12-24	5.49	9.44	240	3.48	88.5	2.46	62.5	7.51	191	1/4	6.35



TIPO / TYPE OC

MEDIDA SIZE	A		B		C		D		E		F		G		H		I		J		K		L	
	in	mm	in	mm	in	mm	in	mm	in	mm	in	mm	in	mm	in	mm	in	mm	in	mm	in	mm	in	mm
12.7 S 1/2 S	4.76	121	1.32	33.5	3.23	82	1.08	27.5	3.50	89	1.99	50.5	8-32	4.17	3.90	99	1.38	35			2.38	60.5	8-32	4.17
19.0 3/4	5.39	137	1.49	38	3.72	94.5	1.27	32.5	4.09	104	4.09	104	8-32	4.17	4.60	117	1.57	40			2.69	68.5	3/16	4.76
25.4 1	6.14	156	1.79	45.5	4.29	109	1.57	40	4.82	122.5	4.68	119	8-32	4.17	5.39	137	1.77	45			3.07	78	3/16	4.76
31.8 1 1/4	8.22	209	2.46	62.5	5.96	151.5	2.18	55.5	6.53	166	6.53	166	12-24	5.49	7.26	184.5	2.46	62.5			4.11	104.5	1/4	6.35
38.1 1 1/2	8.22	209	2.46	62.5	5.96	151.5	2.18	55.5	6.53	166	6.53	166	12-24	5.49	7.26	184.5	2.65	67.5			4.11	104.5	1/4	6.35
50.8 2	9.92	252	3.12	79.5	7.63	194	2.83	72	8.54	217	8.54	217	12-24	5.49	9.44	240	3.48	88.5			4.96	126	1/4	6.35

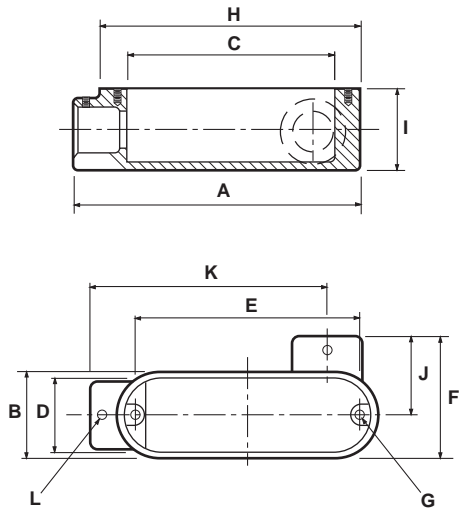


2.1- CAJA OVAL "S". CON TORNILLO. PARA TUBO EMT. DIMENSIONES.

Hoja: 3 / 3
Page:

2.1- OVAL CONDUIT BODIES "S". SETSCREW. FOR USE WITH EMT CONDUIT. DIMENSIONS.

FICHA TECNICA / TECHNICAL DATA
007-RW-272



TIPO / TYPE **OLR**

MEDIDA SIZE	A	B	C	D	E	F	G	H	I	J	K	L												
	in	mm	in	mm	in	mm	in	mm	in	mm	in	mm												
12.7 S 1/2 S	4.33	110	1.32	33.5	3.23	82	1.08	27.5	3.50	89	1.99	50.5	8-32	4.17	3.90	99	1.38	35	1.34	34	3.38	86	8-32	4.17
19.0 3/4	5.0	127	1.47	37.5	3.70	94	1.27	32.5	4.07	103.5	2.26	57.5	8-32	4.17	4.60	117	1.59	40.5	1.51	38.5	3.89	99	3/16	4.76
25.4 1	5.74	146	1.77	45	4.25	108	1.57	40	4.82	122.5	2.51	64	8-32	4.17	5.37	136.5	1.77	45	1.63	41.5	4.60	117	3/16	4.76
31.8 1 1/4	7.83	199	2.48	63	6.02	153	2.20	56	6.57	167	3.30	84	12-24	5.49	7.26	184.5	2.48	63	2.10	53.5	6.25	159	1/4	6.35
38.1 1 1/2	7.75	197	2.48	63	6.02	153	2.20	56	6.53	166	3.30	84	12-24	5.49	7.26	184.5	2.65	67.5	2.04	52	6.25	159	1/4	6.35
50.8 2	9.70	246.5	3.13	79.5	8.14	207	2.83	72	8.54	217	4.05	103	12-24	5.49	9.44	240	3.46	88	2.40	61	7.51	191	1/4	6.35

Cotización/Quotation Plazo de embarque* / Shipment exw* :

Pedido No./Purchase order :

Our ref.:

Fecha/Date: Vendedor/Salesman: No.

Facturar a/Invoice to: RFC.

Ordenado por/Ordered by: Tel. () Fax ()

Dirección/Address:









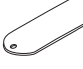
..... C.P./Zip. Lugar/City/Country:

Consignar a/Ship to:

..... Embarcar: Camión x Cobrar Pagado Paquete

Cond. de Pago/Terms:

Cond. de Venta/Sale conditions: L.P.:

2.1 - SERIE OVAL EMT. CON TAPA / EMT WITH COVER.						TAPA/COVER	EMPAQUE / GASKET		
Cantidad piezas									
Std. Pkg. Pzas.	Código: 28.11.XXXX.TC					28.02.	28.05.	28.07.	28.06.
Código xxxx									
12.7 1/2	46 3473.TC	42 3474.TC	63 3475.TC	52 3476.TC	52 3477.TC	10 2991	100 3010	100 3011	100 3012
19.0 3/4	30 0665.TC	20 0695.TC	36 0662.TC	24 0675.TC	24 0685.TC	10 0356	100 0372	100 0528	100 0520
25.4 1	40 0666.TC	32 0696.TC	46 0663.TC	40 0676.TC	40 0686.TC	10 0357	100 0365	100 0529	100 0521
31.8 1 1/4	15 0667.TC	15 0697.TC	16 2566.TC	15 0677.TC	15 0687.TC	10 0363	50 0370	50 0530	50 0522
38.1 1 1/2	15 0668.TC	15 0698.TC	16 2685.TC	15 0678.TC	15 0688.TC	10 0363	50 0370	50 0530	50 0522
50.8 2	6 0669.TC	6 0699.TC	9 2719.TC	6 0679.TC	6 0689.TC	10 0373	25 0366	25 0531	25 0523

Expediente
 Control
 Embarques
 Almacén
 Producción

* S: Corto/Short

- Antes de fincar el pedido en firme, favor de confirmar con fábrica el plazo de embarque definitivo.
- Before place your order, please confirm with RAWELT definitive date of shipment.