

# Light-Pak ELPSM2 emergency lighting system

Cl. I, Div. 1, Groups B, C, D  
Cl. II, Div. 1, Groups E, F, G

NEMA 3R

9L

## Applications:

Light-Pak™ ELPSM2 emergency lighting systems are used:

- To provide safe, reliable illumination for egress areas during failure or interruption of power to the normal lighting system
- To illuminate machinery or panels during a loss of AC power
- In areas where flammable gases and vapors may become present due to abnormal, unusual or accidental conditions
- In manufacturing plants, refineries, petrochemical and chemical plants, waste and sewage treatment facilities, oil terminals, food processing facilities, breweries and other industrial manufacturing or process industry facilities subject to wet or corrosive conditions
- Where moisture, dirt, dust or corrosion will limit the life and reliability of ordinary emergency lighting systems
- Where required by the National Electrical Code, the Life Safety Code or other applicable codes
- In outdoor applications

## Features:

- Copper-free aluminum enclosed, gasketed housing – provides corrosion protection in the most extreme environments
- Durable LED lamp head assemblies – provide protection against water ingress, corrosion and impact
- High temperature rated nickel cadmium battery for reliable operation up to +40°C ambient
- Reduced maintenance costs – self-test, monitoring and diagnostics reduce costly maintenance checks
- Remote mountable lamp heads – lamp heads can be mounted independently from the enclosure, allowing you to focus light where you need it
- Solid state battery charger – ensures long life and reliable battery operation; prevents deep discharge by automatically disconnecting the battery from the luminaire

## Certifications and compliances:

### NEC/CEC:

- Class I, Division 1, Groups B, C, D
- Class II, Division 1, Groups E, F, G
- NEMA 3R

### UL standards:

- UL50E; UL844; UL924; UL1203; UL1598; UL8750

### CSA standards:

- CSA C22.2 No. 141-10
- CSA C22.2 No. 137

### NFPA:

- Life Safety Code NFPA101® - Section 5-9 (Emergency Lighting)

## Standard materials:

- Power supply and remote luminaire enclosure – epoxy powder coated copper-free aluminum
- LED lamp head assembly – epoxy powder coated aluminum
- Exterior hardware – stainless steel
- Cover gasket – neoprene

## Temperature performance data:

Cat. #	Class I & II, Division 1
ELPSM2 (all models)	T5

**Note:** Ambient temperature at which the emergency system is rated is 0°C to +40°C. Operation at temperatures outside this range will affect the battery life and/or charging performance.



## Electrical ratings:

- **Power supply:**  
Input – 120-277 VAC, 50 or 60 Hz; 4W maximum  
Output – 12 VDC
- **LED luminaire heads:**  
Voltage – 12 VDC  
Lamp type – 2W LED, 4W maximum  
Maximum two lamp heads

## Options:

Description	Suffix
• Key operated external battery disconnect switch.....	<b>S794</b>
• Keyless external battery disconnect switch.....	<b>S854</b>

## Photometrics:

- Refer to [www.eaton.com](http://www.eaton.com) (under the Resources tab of each product family) for specific photometric IES files

# Light-Pak ELPSM2 emergency lighting system

Cl. I, Div. 1, Groups B, C, D  
Cl. II, Div. 1, Groups E, F, G

NEMA 3R

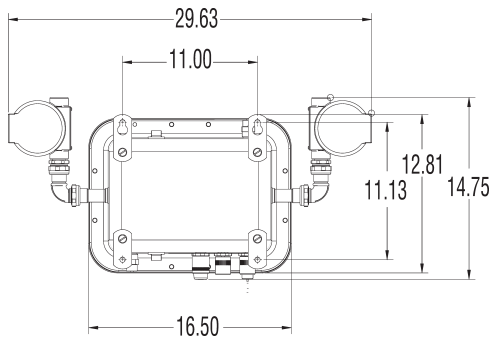
9L

## Ordering information:

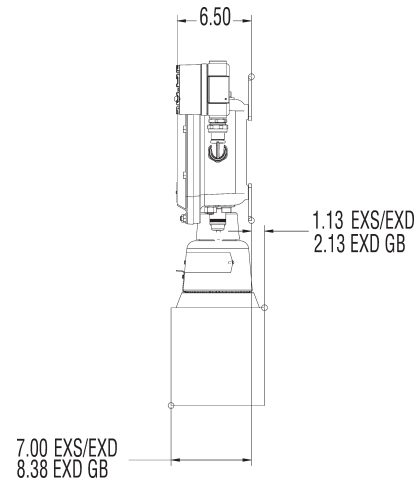
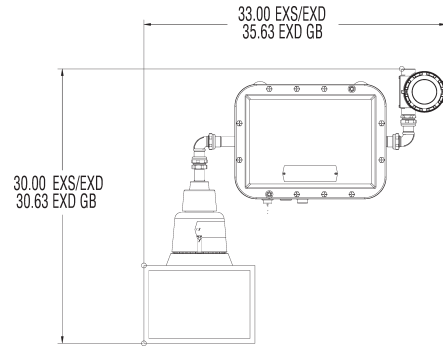
Part number example  
ELPSM22EXSGBGN S794

<b>ELPSM2</b>	<b>2</b>	<b>EXS</b>	<b>GB</b>	<b>GN</b>	<b>S794</b>
<b>Series</b>		<b>Integral exit sign</b>			<b>External battery disconnect switch</b>
<b>ELPSM2</b> Class I, Division 1 emergency luminaire		<b>BLANK</b> No integral exit sign			<b>BLANK</b> No external battery disconnect switch
		<b>EXS<sup>B</sup></b> Single sided integral exit sign			<b>S794</b> Key operated external battery disconnect switch
		<b>EXD<sup>B</sup></b> Double sided integral exit sign			<b>S854</b> Keyless external battery disconnect switch
<b>No. of integral luminaires</b>		<b>Exit sign luminaire<sup>C</sup></b>			<b>Exit sign letter color<sup>C</sup></b>
<b>BLANK</b> No integral luminaires		<b>BLANK</b> Groups C, D exit sign			<b>BLANK</b> Red lettering
<b>2<sup>A</sup></b> Two integral luminaires		<b>GB</b> Groups B, C, D exit sign			<b>GN</b> Green lettering

## Dimensions (in inches):



Standard ELPSM2



ELPSM2 with integral exit sign

<sup>A</sup> Two luminaires comprised of either two lamp heads or one lamp head plus one exit sign lamp.

<sup>B</sup> Not UL or cUL Listed.

<sup>C</sup> Only applicable to assembly with EXS or EXD integral exit sign.